

# BHM Construction, LLC.

License # 900404

221 Gateway Rd West, Suite 405

Napa, Ca. 94558

(707) 643-4580-Tel (707) 643-4581-Fax

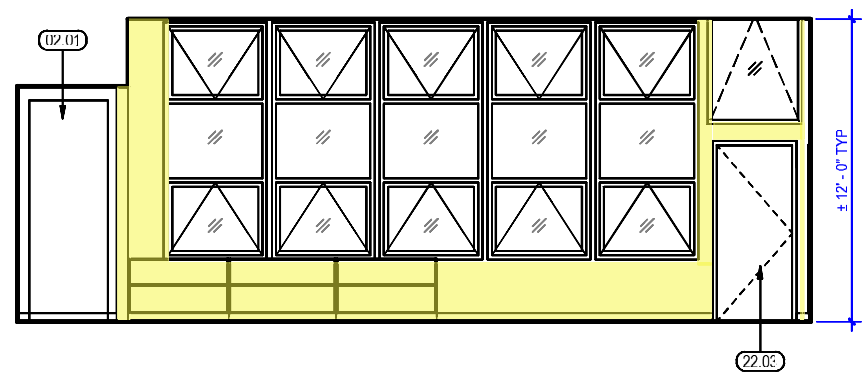
## Project(s):

*WALNUT CREEK SCHOOL DISTRICT*

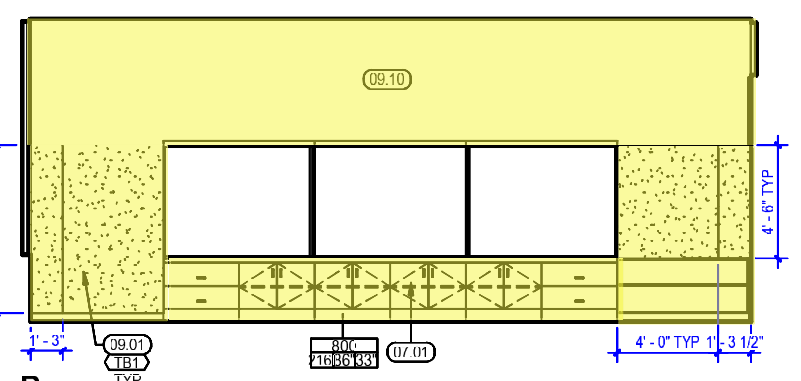
235 - Parkmead Elementary School Modernization

## BID CLARIFICATION #2

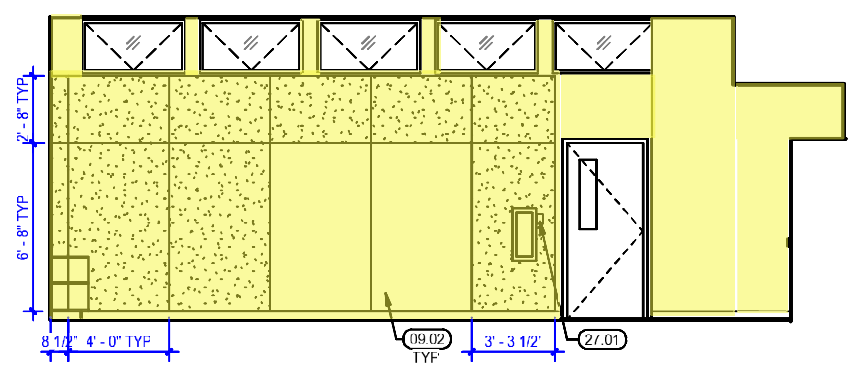
- See attached interior elevation for a typical classroom (TYP of 25 classrooms, although the size of each room varies). The **removal** and **replacement** of wall substrates will be required for added in-wall backing and MEP. In these areas, remove all existing wall finishes to the wall framing / studs, TYP. Please include this square footage quantity in your base bid, if you have not already done so.
- Please also see sheets A6.01, A6.02 and A6.03 for all required ceiling demolition.
- For all other rooms / areas, please refer to demolition sheets A2.01, A2.02, A2.03, A6.01, A6.02 and A6.03 for the required removals.



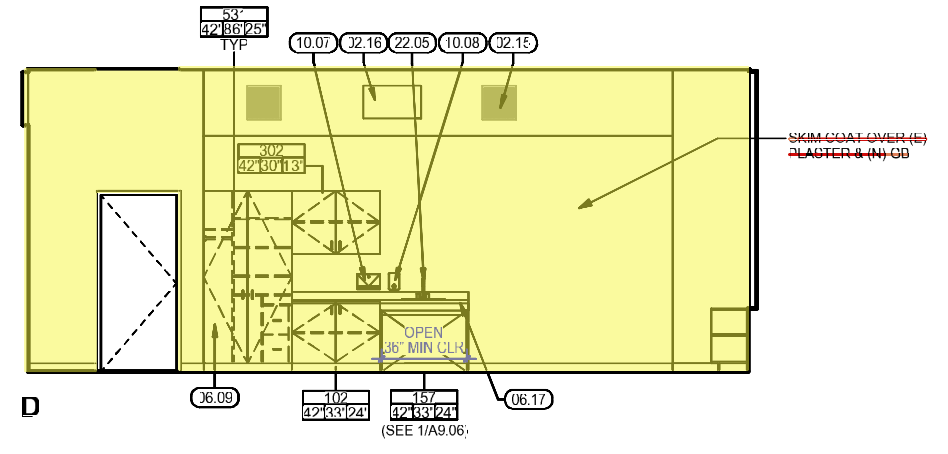
A



B



C



D

**22** BLDG 200 - ROOM 211 - TYPICAL CLASSROOM A  
 1/4" = 1'-0"

C:\Revit\Locals\6035\WCSD Parkmead ES R23 central epalao.rvt 4/24/2024 6:12:17 PM