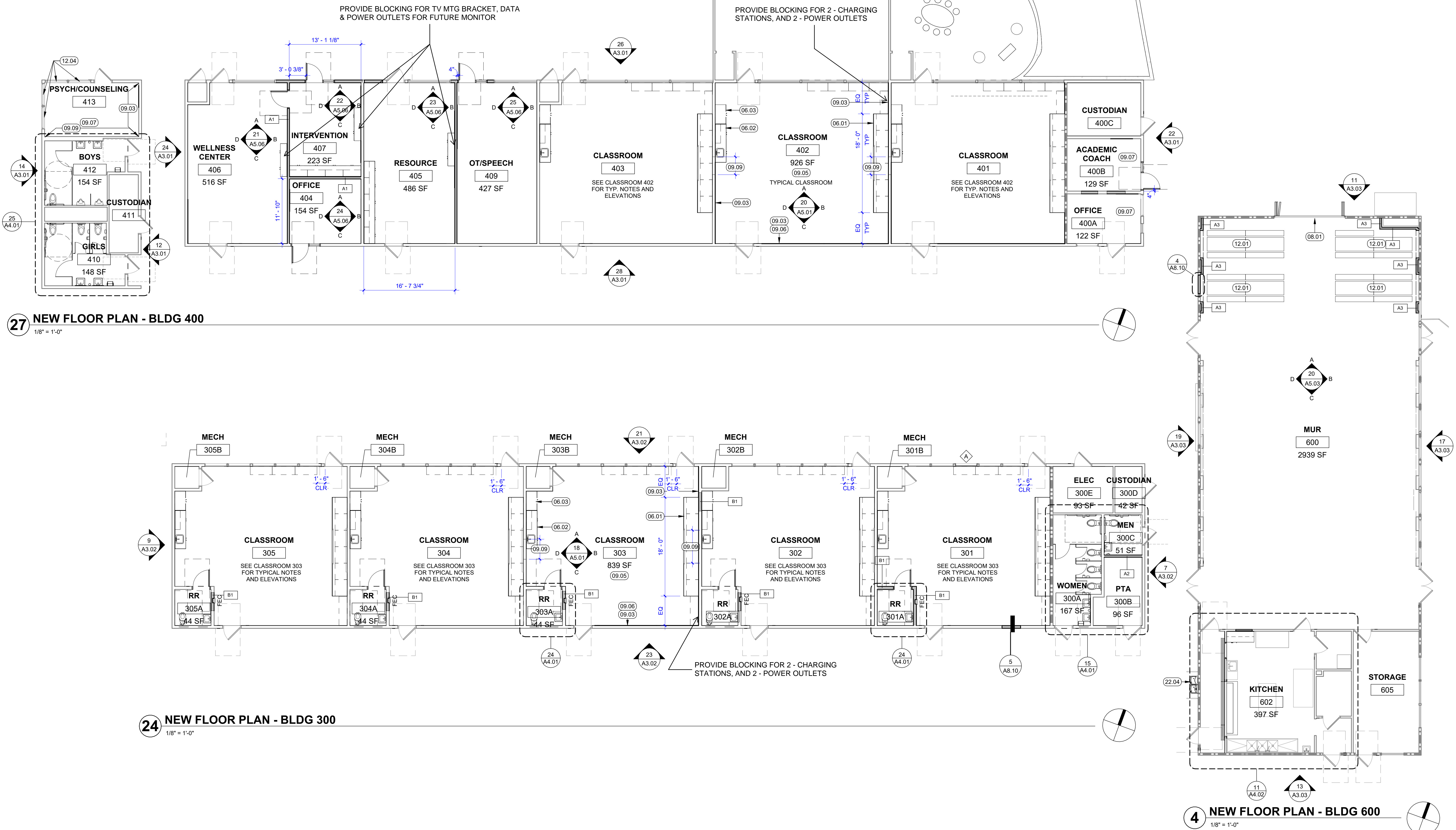




Revisions	Delta	Date	Revisions	By



27 NEW FLOOR PLAN - BLDG 400
1/8" = 1'-0"

24 NEW FLOOR PLAN - BLDG 300
1/8" = 1'-0"

4 NEW FLOOR PLAN - BLDG 600
1/8" = 1'-0"

DSA SUBMITTAL

This document is the property of the Owner and is not to be used without his written permission.

HY HIBSER YAMAUCHI Architects, Inc.
300 - 27th Street
Oakland, CA 94612
510.446.2222 w | 510.446.2211 f

HY Architects Project number: 6034

Facility
BUENA VISTA ELEMENTARY SCHOOL
2355 SAN JUAN AVE, WALNUT CREEK, CA 94597

Project
CAMPUS MODERNIZATION - INCREMENT 1

Sheet Title
FLOOR PLAN - BLDG 300, 400, & 600

Client Project Number: Client Proj. #

Scale: As indicated
Drawn By: Author
Checked By: Checker
Issue Date: 12/15/23
Revit Version: 2023

A2.04
Sheet of

FLOOR PLAN GENERAL NOTES

1. NOTIFY ARCHITECT OF ANY IN THE FIELD DISCREPANCIES PRIOR TO START OF CONSTRUCTION.
2. ALL DIMENSIONS SHALL BE FACE OF STUD. UON. DIMENSIONS NOTED AS "CLR" REFER TO CLEAR DIMENSION FROM FACE OF FINISH.
3. CLEAN ALL (E) TACKABLE SURFACES IN EACH ROOM.
4. SEE ID SHEETS FOR ADDITIONAL INFORMATION.
5. SIGNAGE, TYP. SEE SIGNAGE SCHEDULE.
6. SEE SHEET A0.02 FOR FULL EXTENT OF PROPERTY LINES.

PARTITION LEGEND

- NOTE: FOR ANY PARTITION THAT IS NOT TAGGED ON THE PLAN, REFER TO ITS CORRESPONDING GRAPHIC IN THIS WALL LEGEND TO DETERMINE ITS TYPE
- EXISTING WALL & PARTITION TYPES:**
- (E) 1 HR. RATED FIRE PARTITION (CORRIDOR) W/ 20 MIN. PROTECTED OPENINGS.
 - (E) 2 HR. RATED FIRE BARRIER W/ 90 MIN. PROTECTED OPENINGS (OCCUPANCY SEPARATION).
 - (E) NON-RATED FIRE-RESISTIVE PARTITION (W/ UNPROTECTED OPENINGS) AND/ OR EXTERIOR WALL TO REMAIN.
 - (E) STRUCTURAL WALL, SSD.
- NEW WALL & PARTITION TYPES:**
- A1 (N) NON-RATED FIRE-RESISTIVE PARTITION W/ UNPROTECTED OPENINGS, TYP UON, SEE 5 / A9.01
 - A2 (N) NON-RATED FIRE-RESISTIVE PARTITION W/ UNPROTECTED OPENINGS, TYP UON, SEE 10 / A9.01
 - A3 (N) NON-RATED FIRE-RESISTIVE PARTITION W/ UNPROTECTED OPENINGS, TYP UON, SEE 15 / A9.01
 - B1 (N) NON-RATED FIRE-RESISTIVE PARTITION W/ UNPROTECTED OPENINGS, TYP UON, SEE 20 / A9.01

KEYNOTES

- 06.01 TEACHING WALL, TYP. SEE INTERIOR ELEVATIONS
- 06.02 CLASSROOM CASEWORK, TYP. SEE INTERIOR ELEVATIONS
- 06.03 TEACHER CABINET, TYP. SEE INTERIOR ELEVATIONS
- 08.01 NANAWALL DOOR, SEE DOOR SCHEDULE
- 09.03 TACKBOARD WALL FINISH, SEE INTERIOR ELEVATIONS, SEE FINISH PLAN
- 09.05 RESILIENT FLOORING, RUBBER BASE
- 09.06 MARKER BOARD WALL FINISH, SEE INTERIOR ELEVATIONS
- 09.07 CARPET TILE FINISH, RUBBER BASE
- 09.09 PATCH WALL FINISH TO MATCH ADJACENT WALL FINISH, TYP. SEE INTERIOR ELEVATIONS
- 09.12 SEALED CONCRETE FLOORING, RUBBER BASE
- 12.01 LUNCH TABLE POCKET WALL STORAGE, SEE INTERIOR ELEVATIONS
- 12.04 IN-CEILING MOTORIZED ROLLER SHADE
- 22.04 HI-LO DRINKING FOUNTAIN WITH BOTTLE FILLER

FLOOR PLAN LEGEND

- (E) DOOR TO REMAIN, SEE DOOR SCHEDULE
- (N) DOOR, SEE DOOR SCHEDULE
- WINDOW, SEE WINDOW SCHEDULE
- FIRE EXTINGUISHER CABINET
- (N) RESILIENT FLOOR ASSEMBLY, SEE DETAIL

FLOOR PLAN GENERAL NOTES

1. NOTIFY ARCHITECT OF ANY IN THE FIELD DISCREPANCIES PRIOR TO START OF CONSTRUCTION.
2. ALL DIMENSIONS SHALL BE FACE OF STUD. UON. DIMENSIONS NOTED AS "CLR" REFER TO CLEAR DIMENSION FROM FACE OF FINISH.
3. CLEAN ALL (E) TACKABLE SURFACES IN EACH ROOM.
4. SEE ID SHEETS FOR ADDITIONAL INFORMATION.
5. SIGNAGE, TYP. SEE SIGNAGE SCHEDULE.
6. SEE SHEET A0.02 FOR FULL EXTENT OF PROPERTY LINES.

PARTITION LEGEND

NOTE: FOR ANY PARTITION THAT IS NOT TAGGED ON THE PLAN, REFER TO ITS CORRESPONDING GRAPHIC IN THIS WALL LEGEND TO DETERMINE ITS TYPE.

EXISTING WALL & PARTITION TYPES:

- (E) 1 HR. RATED FIRE PARTITION (CORRIDOR) W/ 20 MIN. PROTECTED OPENINGS.
- (E) NON-RATED FIRE-RESISTIVE PARTITION (W/ UNPROTECTED OPENINGS) AND/OR EXTERIOR WALL TO REMAIN.
- (E) STRUCTURAL WALL, SSD.

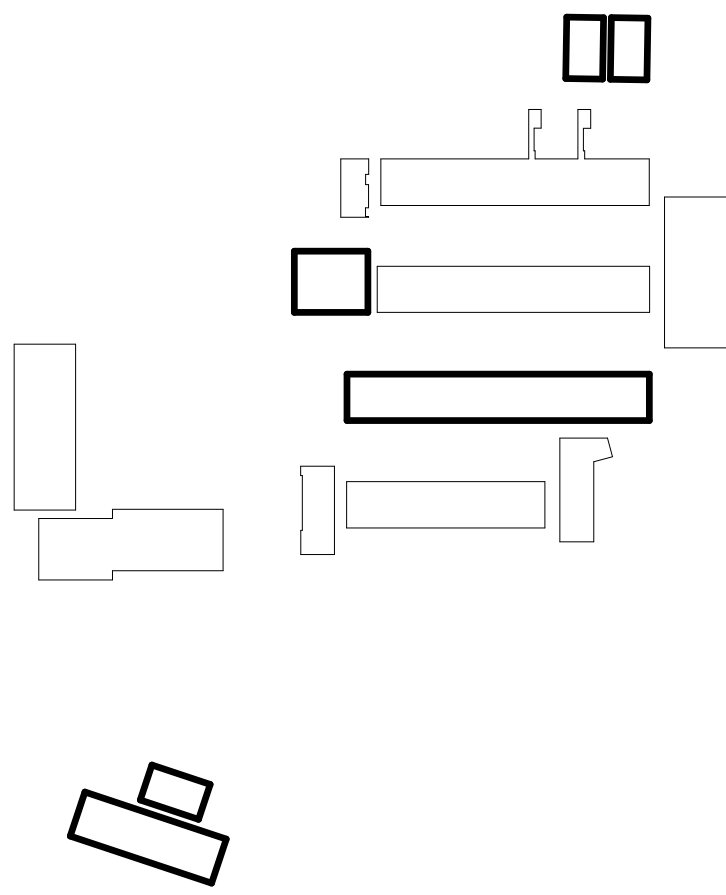
NEW WALL & PARTITION TYPES:

- A1 (N) NON-RATED FIRE-RESISTIVE PARTITION W/ UNPROTECTED OPENINGS, TYP UON, SEE (S) A8.01



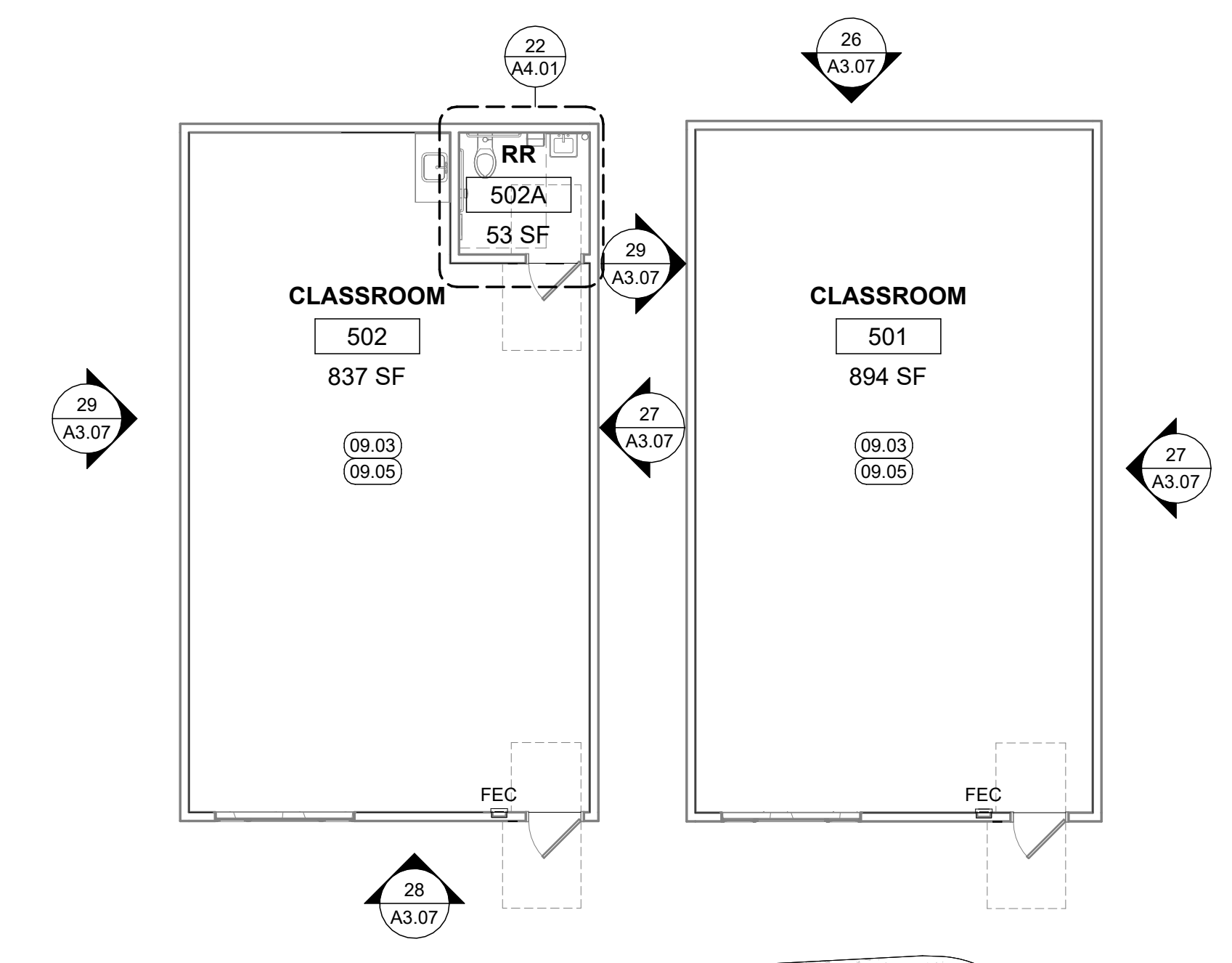
Revisions	Delta	Date	Revisions	By

DSA SUBMITTAL

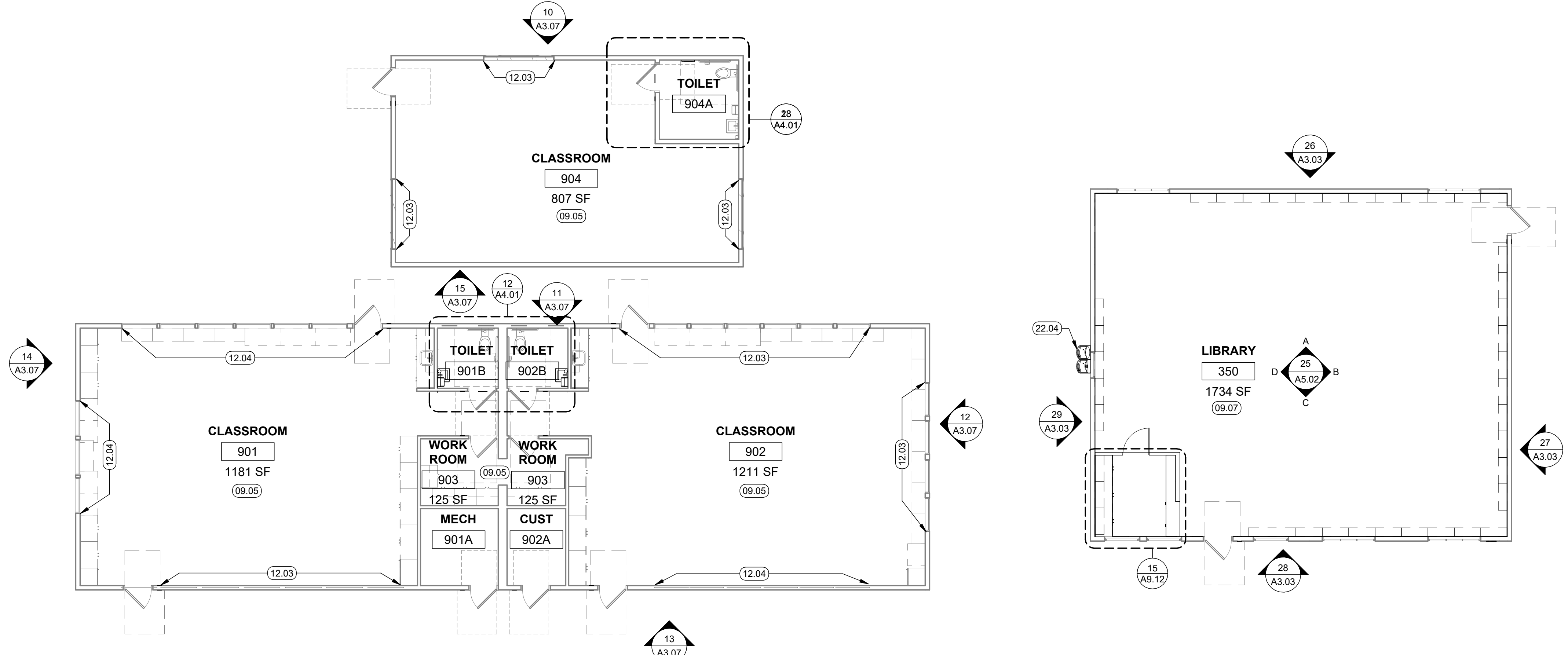


KEYNOTES

- 02.01 (E) STRUCTURAL WALL
- 06.01 TEACHING WALL, TYP. SEE INTERIOR ELEVATIONS
- 06.02 CLASSROOM CASEWORK, TYP. SEE INTERIOR ELEVATIONS
- 06.03 TEACHER CABINET, TYP. SEE INTERIOR ELEVATIONS
- 06.06 CASEWORK, TYP.
- 09.03 TACKBOARD WALL FINISH, SEE INTERIOR ELEVATIONS, SEE FINISH PLAN
- 09.05 RESILIENT FLOORING, RUBBER BASE
- 09.06 MARKER BOARD WALL FINISH, SEE INTERIOR ELEVATIONS
- 09.07 CARPET TILE FINISH, RUBBER BASE
- 09.09 PATCH WALL FINISH TO MATCH ADJACENT WALL FINISH, TYP. SEE INTERIOR ELEVATIONS
- 11.04 RELOCATE (E) VENDING MACHINES
- 12.03 WALL-MOUNT MOTORIZED ROLLER SHADE WITH FASCIA
- 12.04 IN-CEILING MOTORIZED ROLLER SHADE
- 22.04 HI-LO DRINKING FOUNTAIN WITH BOTTLE FILLER

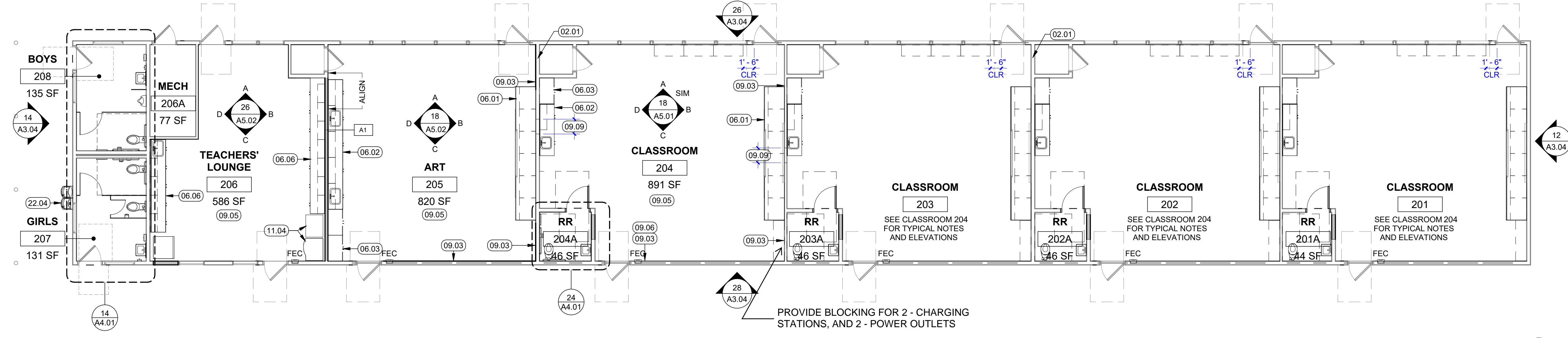


17 NEW FLOOR PLAN - BLDG 500
1/8" = 1'-0"



24 NEW FLOOR PLAN - BLDG 900
1/8" = 1'-0"

9 NEW FLOOR PLAN - BLDG 350
1/8" = 1'-0"



30 NEW FLOOR PLAN - BLDG 200
1/8" = 1'-0"

FLOOR PLAN LEGEND

- (E) DOOR TO REMAIN, SEE DOOR SCHEDULE
- (N) DOOR, SEE DOOR SCHEDULE
- WINDOW, SEE WINDOW SCHEDULE
- FEC FIRE EXTINGUISHER CABINET
- (N) RESILIENT FLOOR ASSEMBLY, SEE DETAIL

This document is the property of the Owner and is not to be used without his written permission.

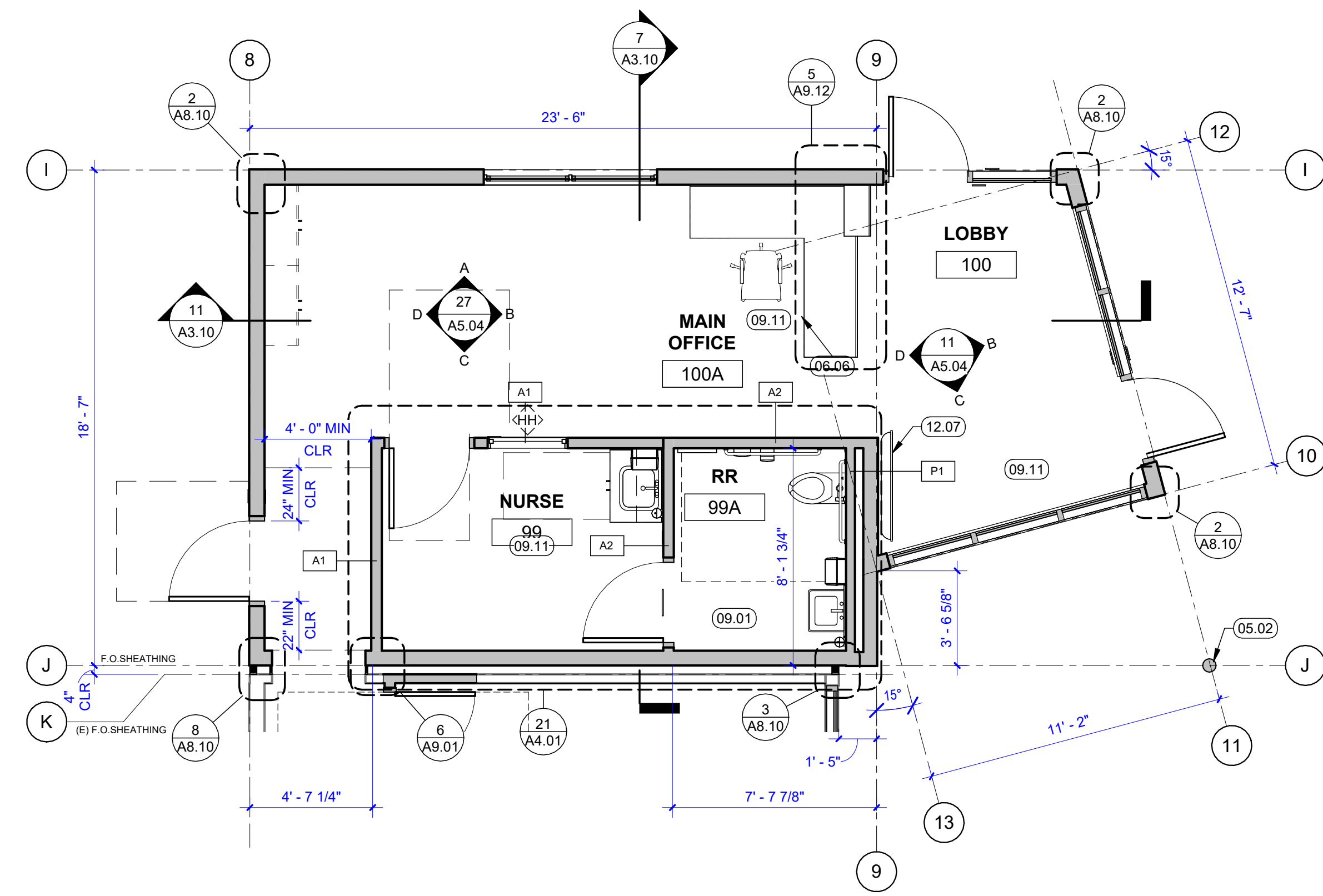


BUENA VISTA ELEMENTARY SCHOOL
2355 SAN JUAN AVE, WALNUT CREEK, CA 94597

CAMPUS MODERNIZATION - INCREMENT 1

Sheet Title
FLOOR PLAN - BLDG 200, 350, 500, & 900

Client Project Number:	Client Proj. #
Scale: As indicated	Sheet
Drawn By: Author	A2.05
Checked By: Checker	
Issue Date: 12/15/23	
Revit Version: 2023	Sheet of



12 ENLARGED FLOOR PLAN - BLDG 100 ADDITION
1/4" = 1'-0"

FLOOR PLAN GENERAL NOTES

1. NOTIFY ARCHITECT OF ANY IN THE FIELD DISCREPANCIES PRIOR TO START OF CONSTRUCTION.
2. ALL DIMENSIONS SHALL BE FACE OF STUD. UN. DIMENSIONS NOTED AS "CLR" REFER TO CLEAR DIMENSION FROM FACE OF FINISH.
3. CLEAN ALL (E) TACKABLE SURFACES IN EACH ROOM.
4. SEE ID SHEETS FOR ADDITIONAL INFORMATION.
5. SIGNAGE, TYP. SEE SIGNAGE SCHEDULE.
6. SEE SHEET A0.02 FOR FULL EXTENT OF PROPERTY LINES.

PARTITION LEGEND

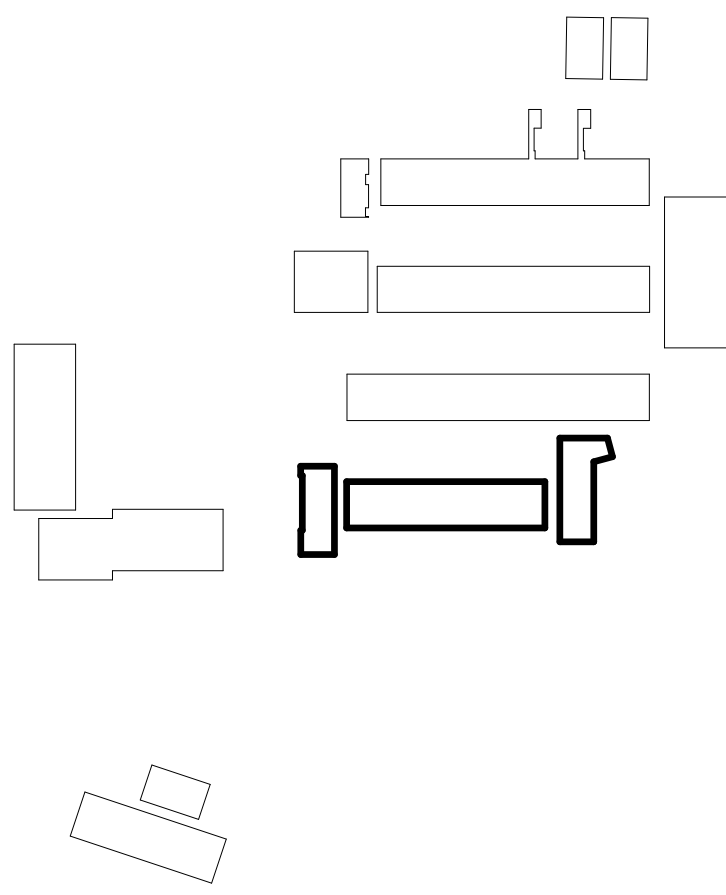
NOTE: FOR ANY PARTITION THAT IS NOT TAGGED ON THE PLAN, REFER TO ITS CORRESPONDING GRAPHIC IN THIS WALL LEGEND TO DETERMINE ITS TYPE

- EXISTING WALL & PARTITION TYPES:**
- (E) NON-RATED FIRE-RESISTIVE PARTITION (W/ UNPROTECTED OPENINGS) AND/OR EXTERIOR WALL TO REMAIN.
- NEW WALL & PARTITION TYPES:**
- A1 (N) NON-RATED FIRE-RESISTIVE PARTITION W/ UNPROTECTED OPENINGS, TYP UN. SEE (S) A8.01
 - A2 (N) NON-RATED FIRE-RESISTIVE PARTITION W/ UNPROTECTED OPENINGS, TYP UN. SEE (S) A8.01
 - B1 (N) NON-RATED FIRE-RESISTIVE PARTITION W/ UNPROTECTED OPENINGS, TYP UN. SEE (S) A8.01
 - P1 (N) NON-RATED FIRE-RESISTIVE PARTITION W/ UNPROTECTED OPENINGS, TYP UN. SEE (S) A8.01



Revisions	Delta	Date	Revisions	By

DSA SUBMITTAL

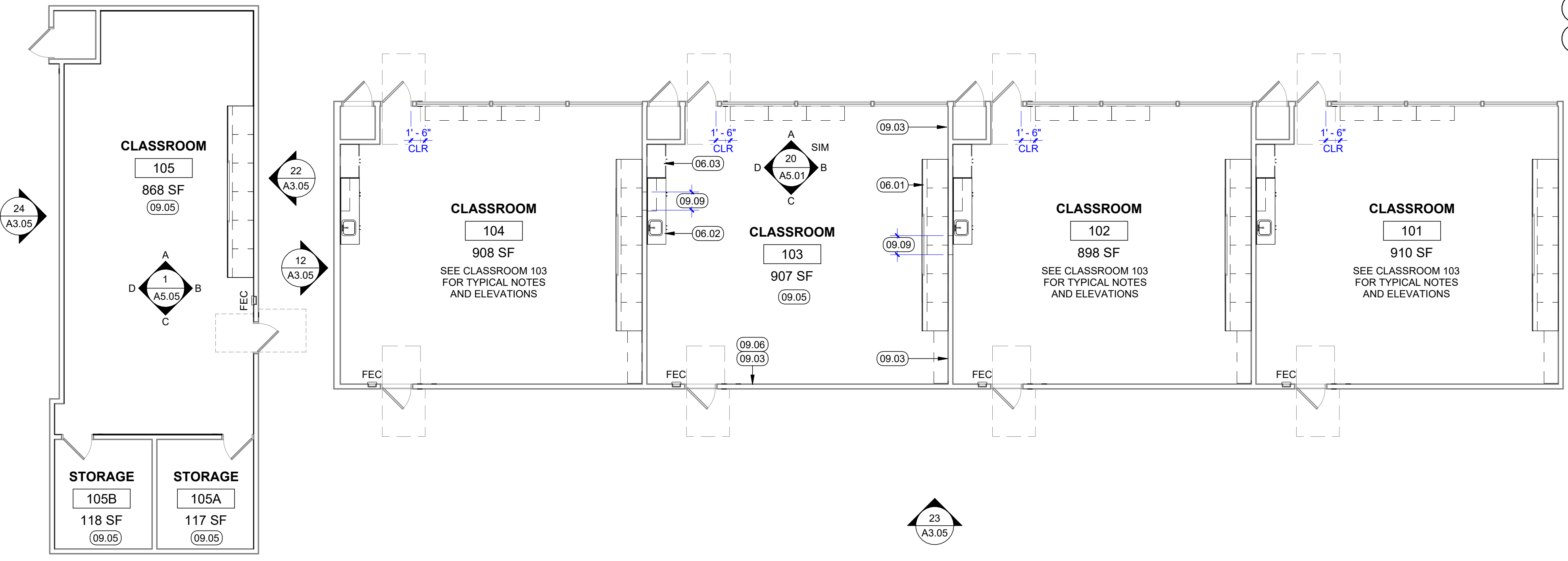


KEYNOTES

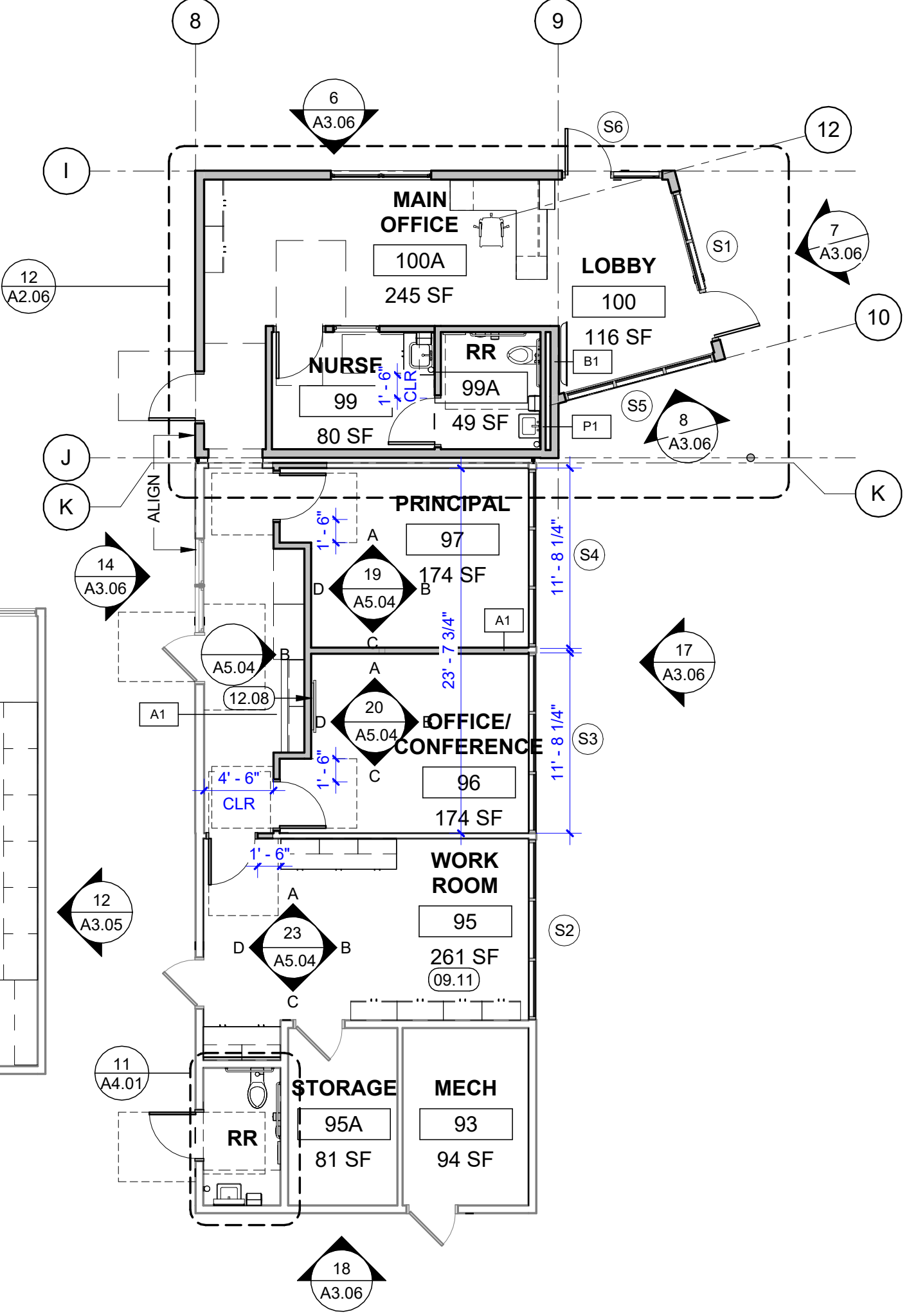
- 05.02 STRUCTURAL COLUMN, SSD
- 06.01 TEACHING WALL, TYP. SEE INTERIOR ELEVATIONS
- 06.02 CLASSROOM CASEWORK, TYP. SEE INTERIOR ELEVATIONS
- 06.03 TEACHER CABINET, TYP. SEE INTERIOR ELEVATIONS
- 06.06 CASEWORK, TYP.
- 09.01 EPOXY FLOORING, COVE BASE
- 09.03 TACKBOARD WALL FINISH, SEE INTERIOR ELEVATIONS, SEE FINISH PLAN
- 09.05 RESILIENT FLOORING, RUBBER BASE
- 09.06 MARKER BOARD WALL FINISH, SEE INTERIOR ELEVATIONS
- 09.09 PATCH WALL FINISH TO MATCH ADJACENT WALL FINISH, TYP. SEE INTERIOR ELEVATIONS
- 09.11 RESILIENT TILE FLOORING, RUBBER BASE
- 12.07 TELEVISION SCREEN DISPLAY, PROVIDE BLOCKING
- 12.08 MONITOR

FLOOR PLAN LEGEND

- (E) DOOR TO REMAIN, SEE DOOR SCHEDULE
- (N) DOOR, SEE DOOR SCHEDULE
- WINDOW, SEE WINDOW SCHEDULE
- FEC FIRE EXTINGUISHER CABINET
- (N) RESILIENT FLOOR ASSEMBLY, SEE DETAIL



30 NEW FLOOR PLAN - BLDG 100
1/8" = 1'-0"



This document is the property of the Owner and is not to be used without his written permission

HY HIBSER YAMAUCHI Architects, Inc.
300 - 27th Street
Oakland, CA 94612
510.446.2222 | 510.446.2211 fax
HY Architects Project number: 6034

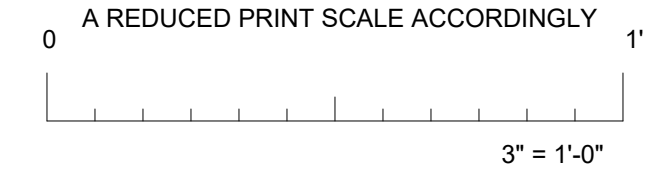
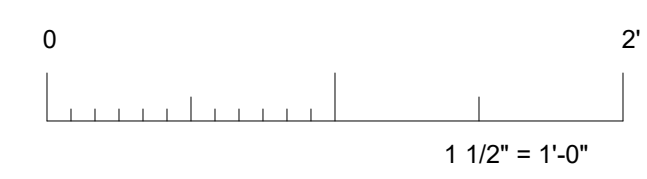
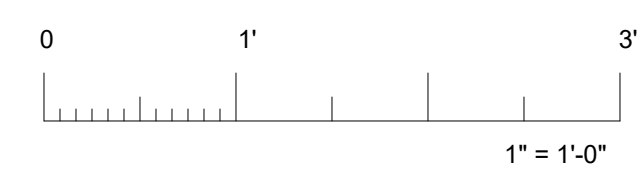
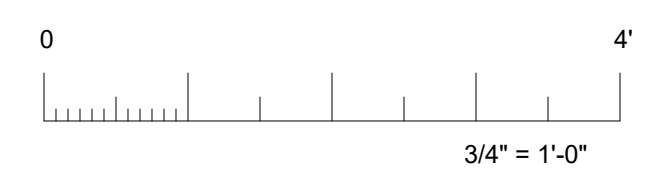
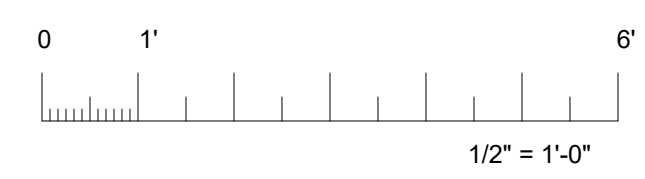
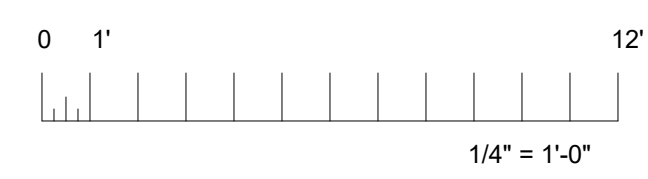
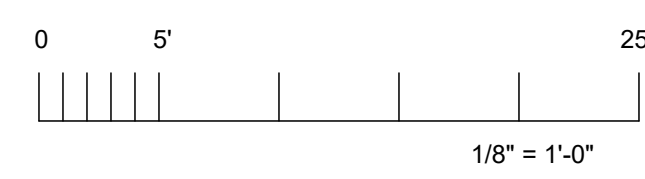
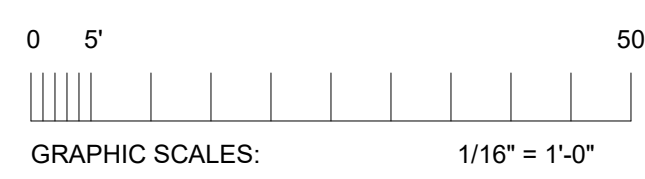
Facility
BUENA VISTA ELEMENTARY SCHOOL
2355 SAN JUAN AVE, WALNUT CREEK, CA 94597

Project
CAMPUS MODERNIZATION - INCREMENT 1

Sheet Title
FLOOR PLAN - BLDG 100

Client Project Number: _____ Client Proj. # _____
Scale: As indicated
Drawn By: Author
Checked By: Checker
Issue Date: 12/15/23
Revit Version: 2023

A2.06
Sheet of _____



IF THIS SHEET IS NOT 30"x42", IT IS A REDUCED PRINT SCALE ACCORDINGLY

GENERAL INTERIOR ELEVATION NOTES

1. REFER TO H.00 FOR FINISH SYMBOL LEGEND, GENERAL NOTES, & SCHEDULE.
2. REFER TO SG SERIES SHEETS FOR SIGNAGE CODE DESCRIPTIONS & SPECIFICATIONS.
3. FOR ADA COMPLIANT MOUNTING HEIGHTS OF FURNITURE, EQUIPMENT, TOILET & LAVATORY ACCESSORIES REFER TO 12 / A9.04

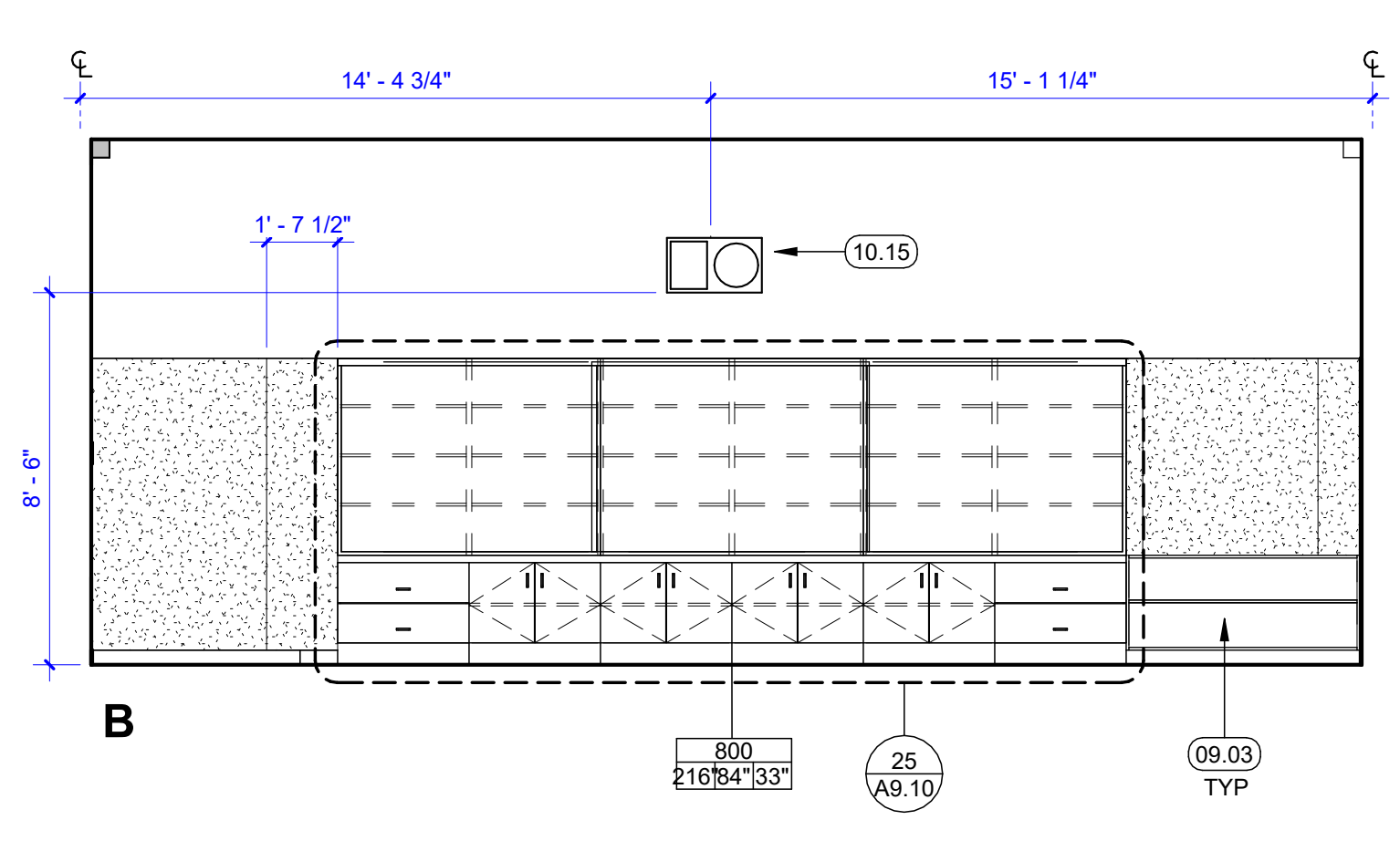
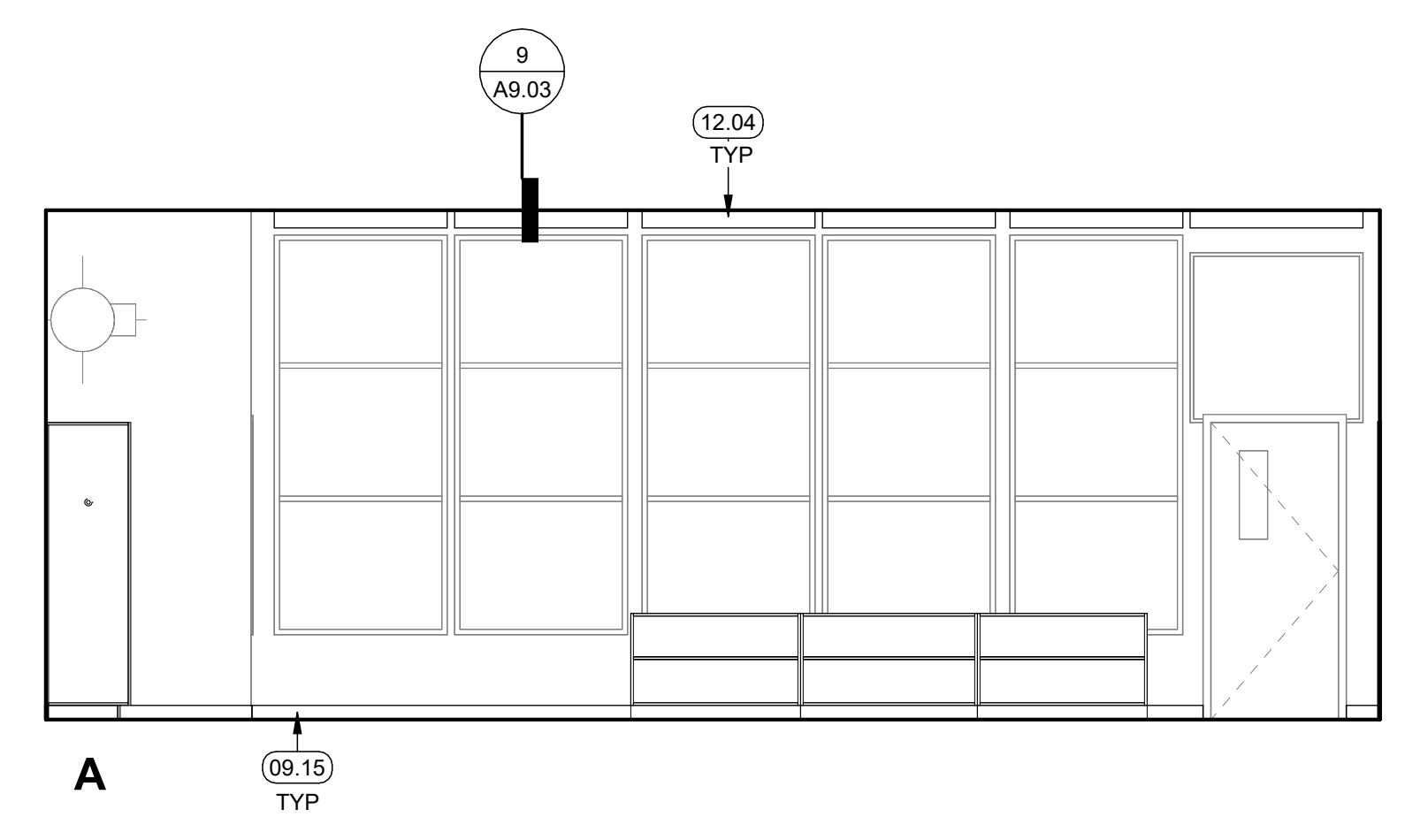
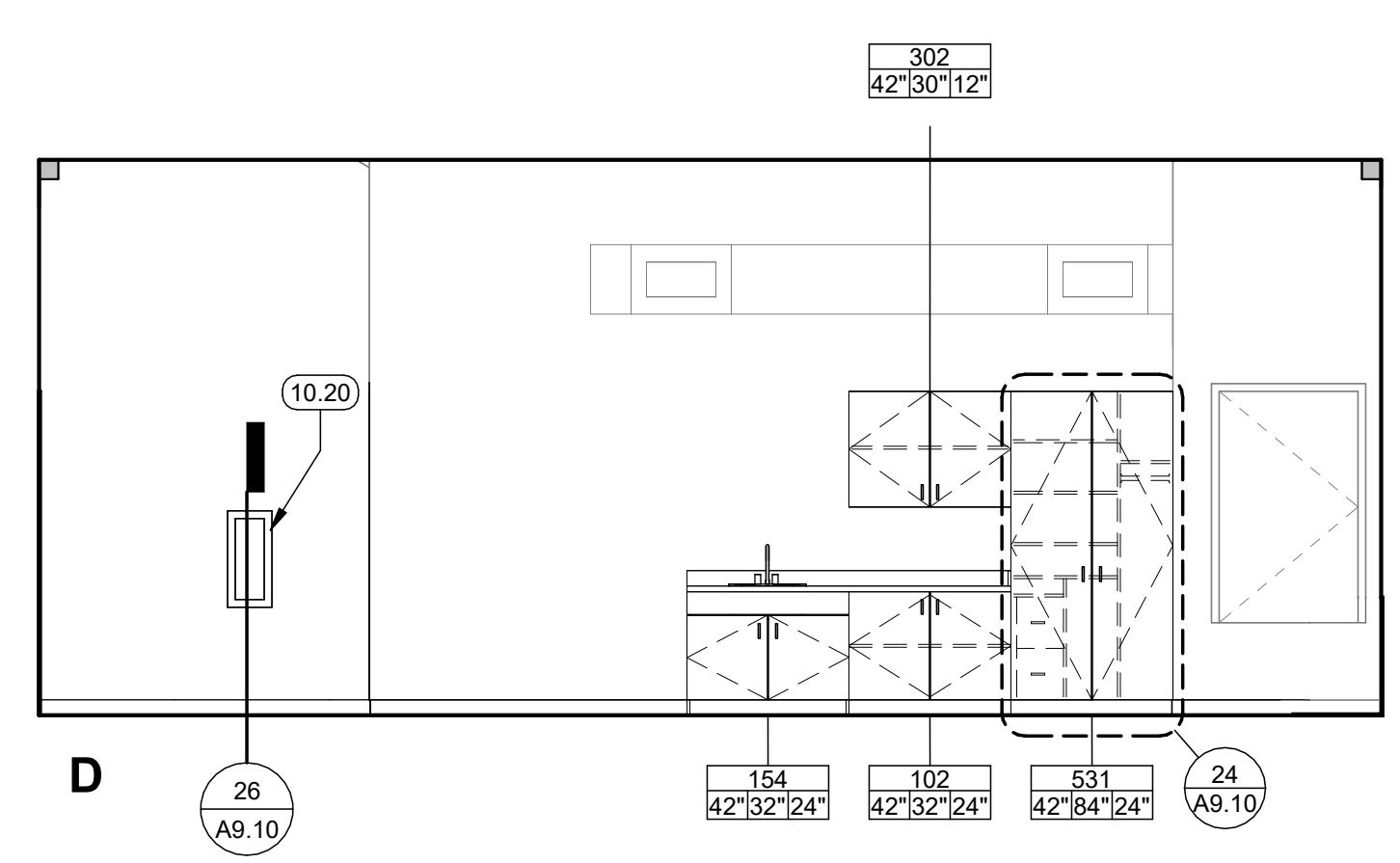
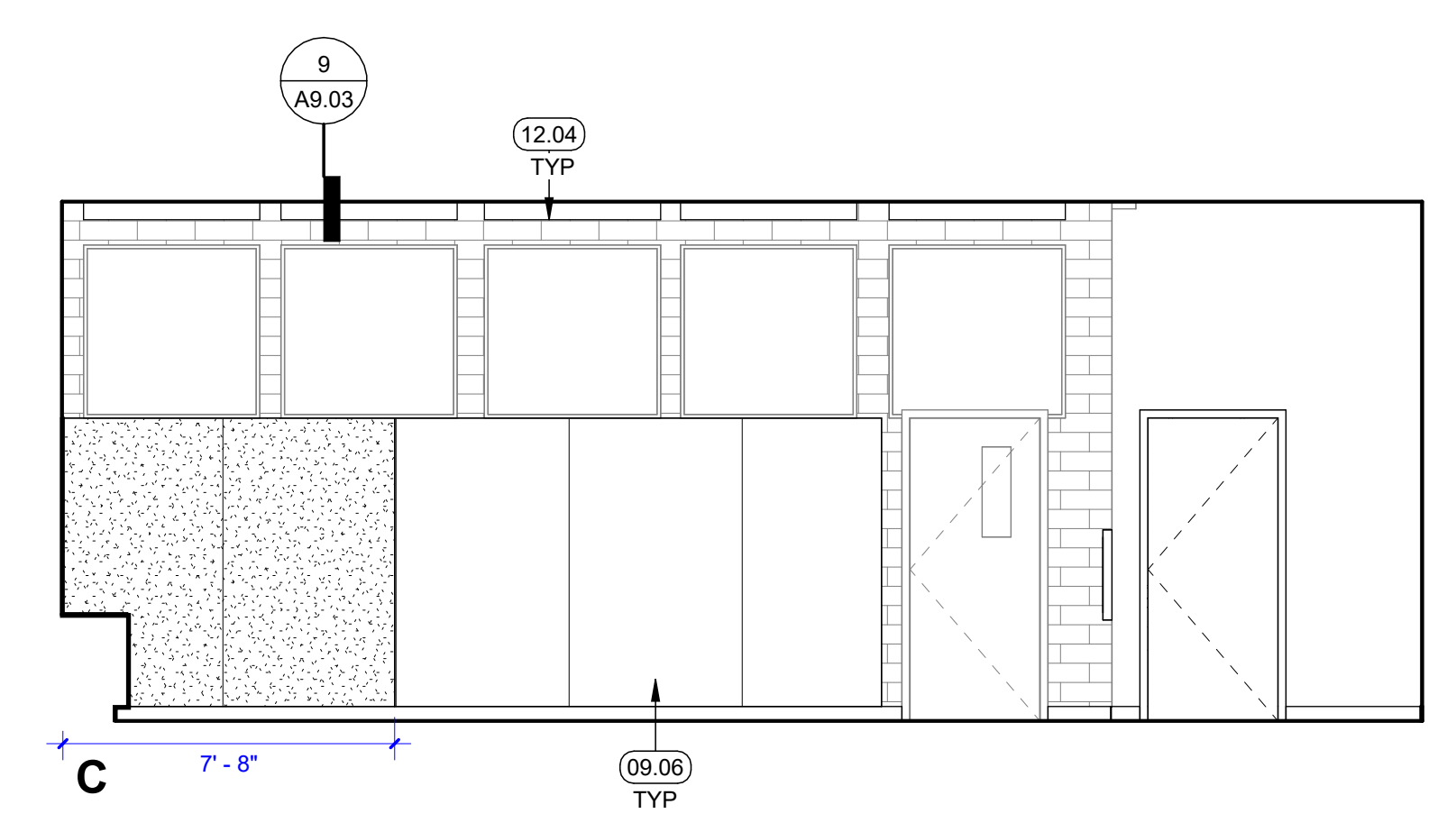


Revisions	Delta	Date	Revisions	By

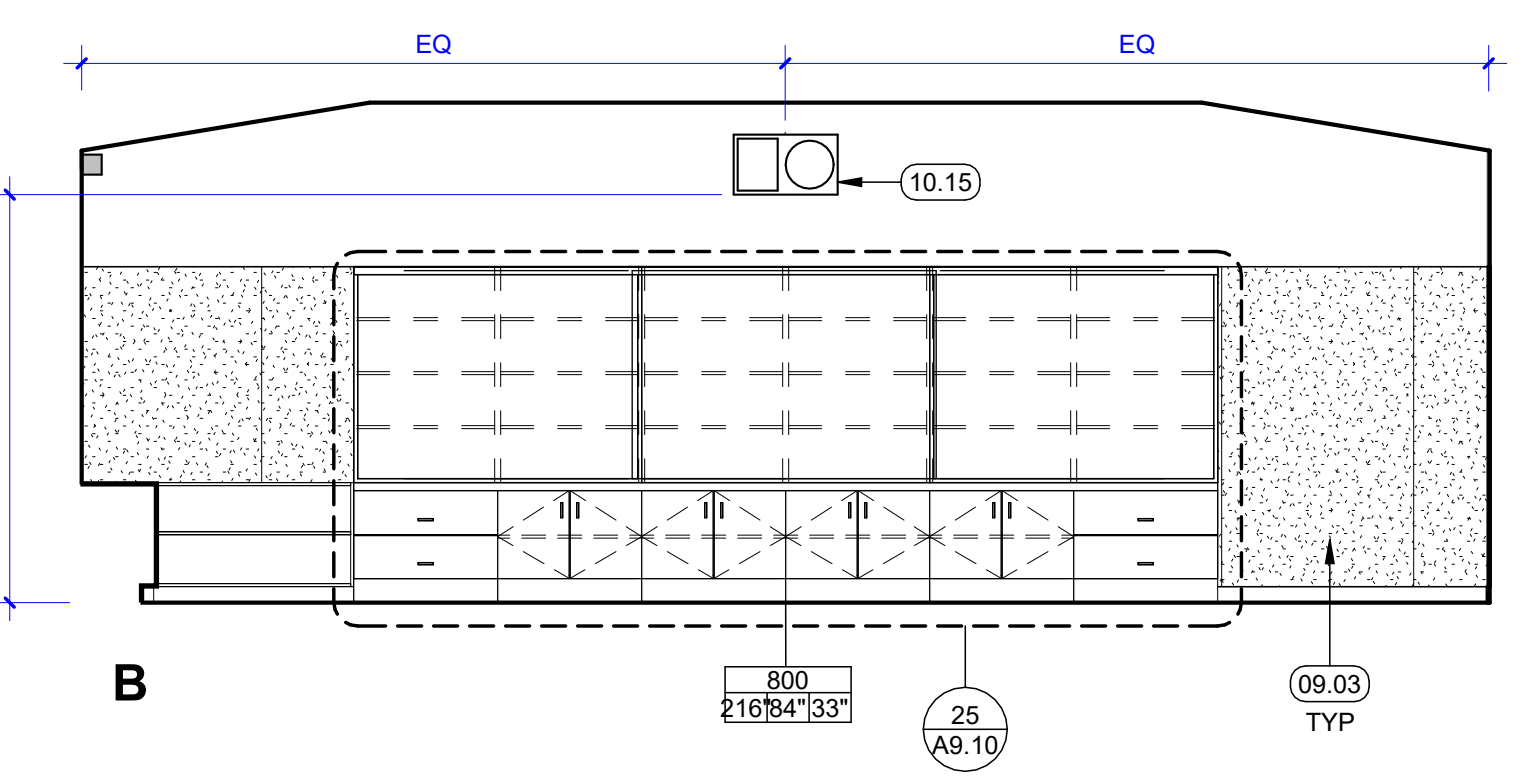
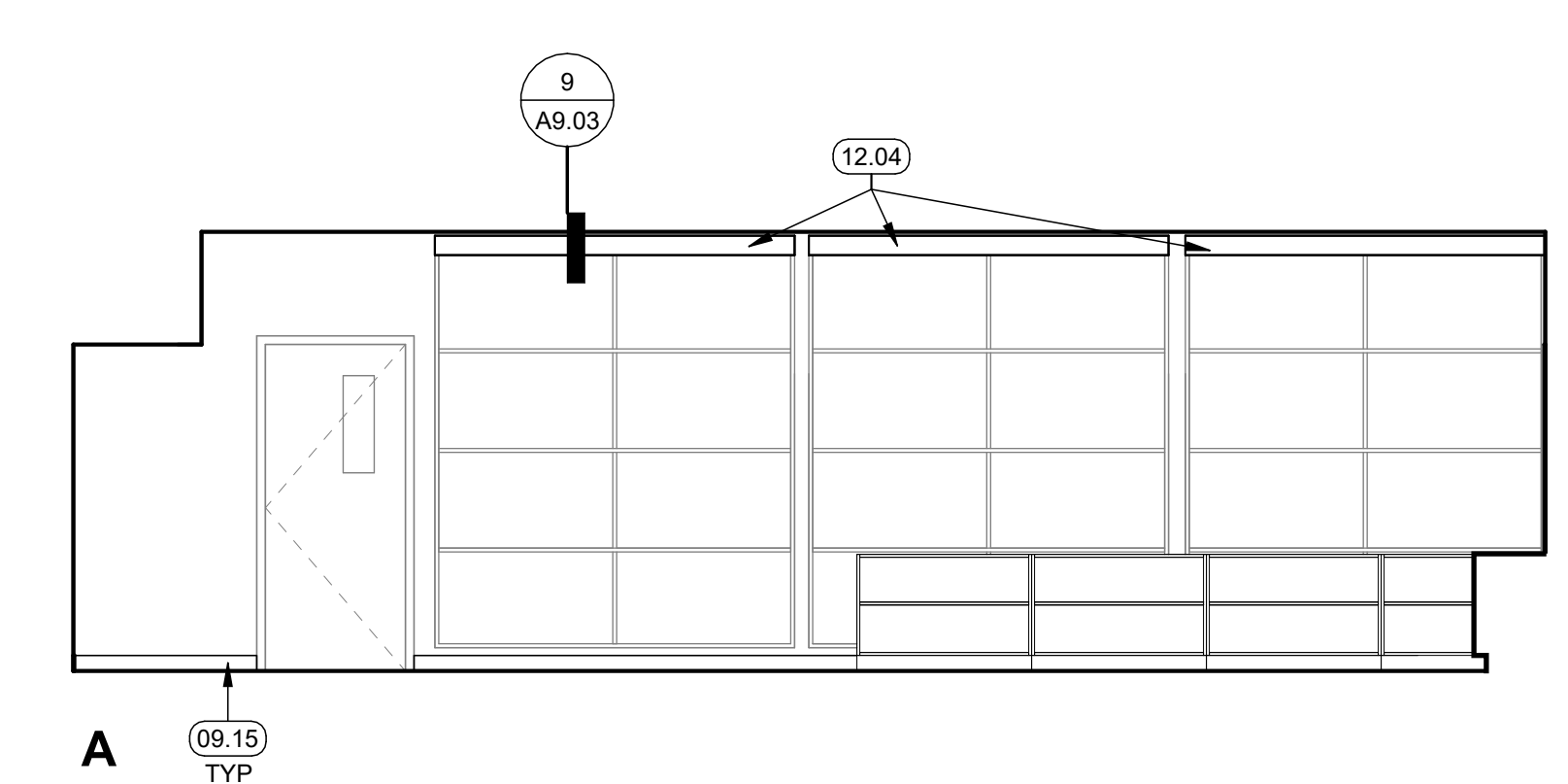
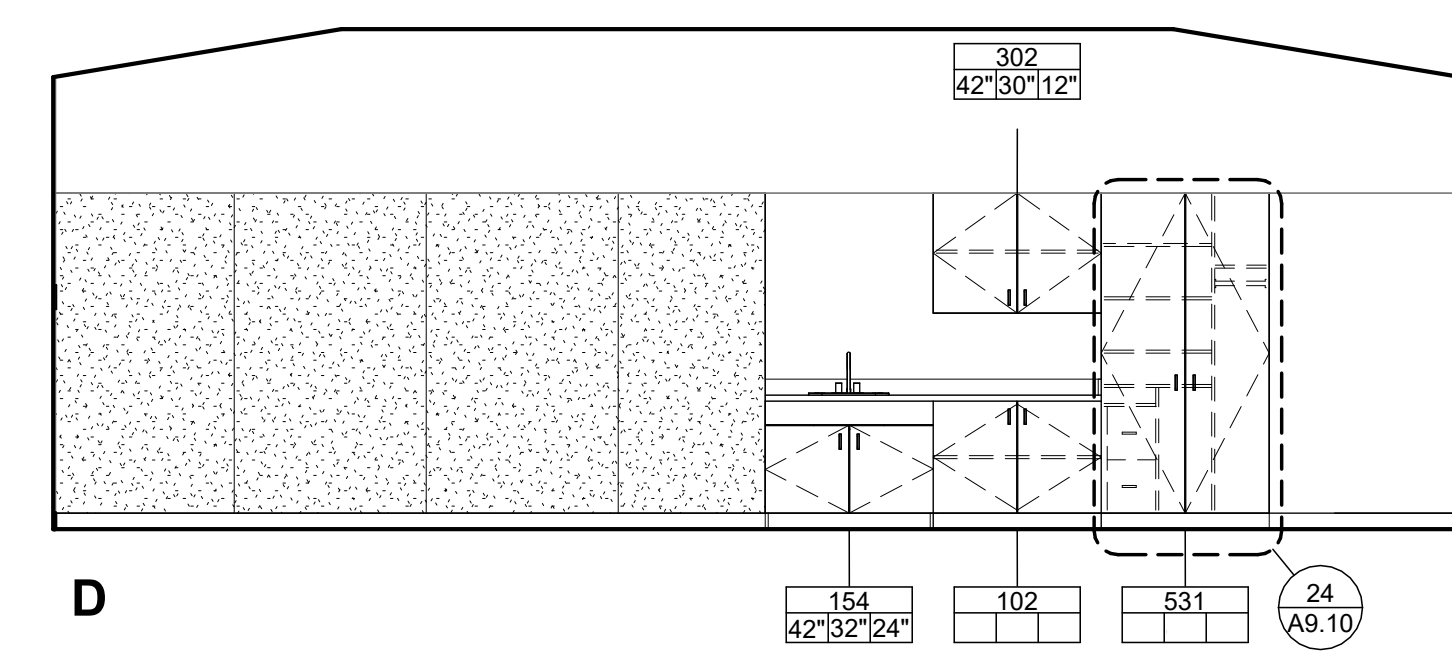
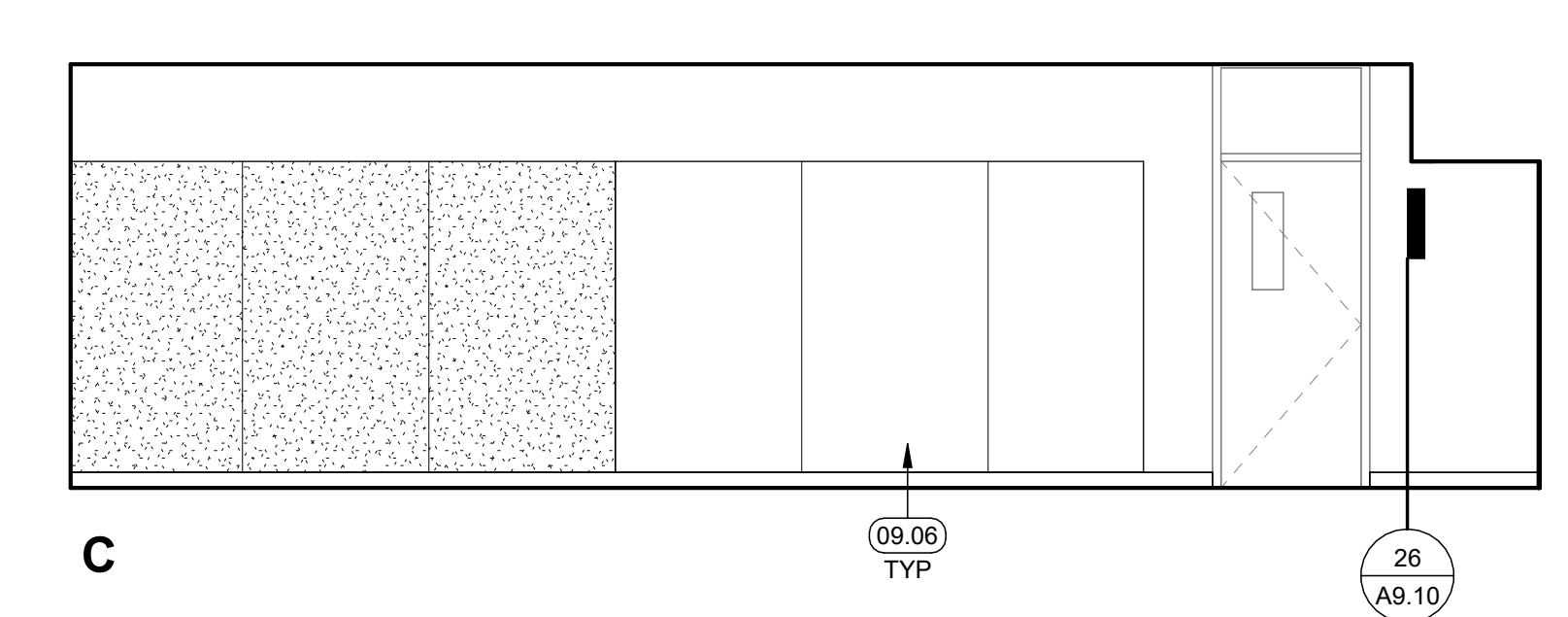
DSA SUBMITTAL

KEYNOTES

- 09.03 TACKBOARD WALL FINISH, SEE INTERIOR ELEVATIONS, SEE FINISH PLAN
- 09.06 MARKER BOARD WALL FINISH, SEE INTERIOR ELEVATIONS
- 09.15 4" TOP SET WALL BASE
- 10.15 CLOCK/BELL/SPEAKER, SED
- 10.20 RECESSED FIRE EXTINGUISHER CABINET
- 12.04 IN-CEILING MOTORIZED ROLLER SHADE



18 INTERIOR ELEVATION - CLASSROOM 303
1/4" = 1'-0"



20 INTERIOR ELEVATION - CLASSROOM 402
1/4" = 1'-0"

This document is the property of the Owner and is not to be used without his written permission



HY Architects Project number: 6034

Facility
BUENA VISTA ELEMENTARY SCHOOL
2355 SAN JUAN AVE, WALNUT CREEK, CA
94597

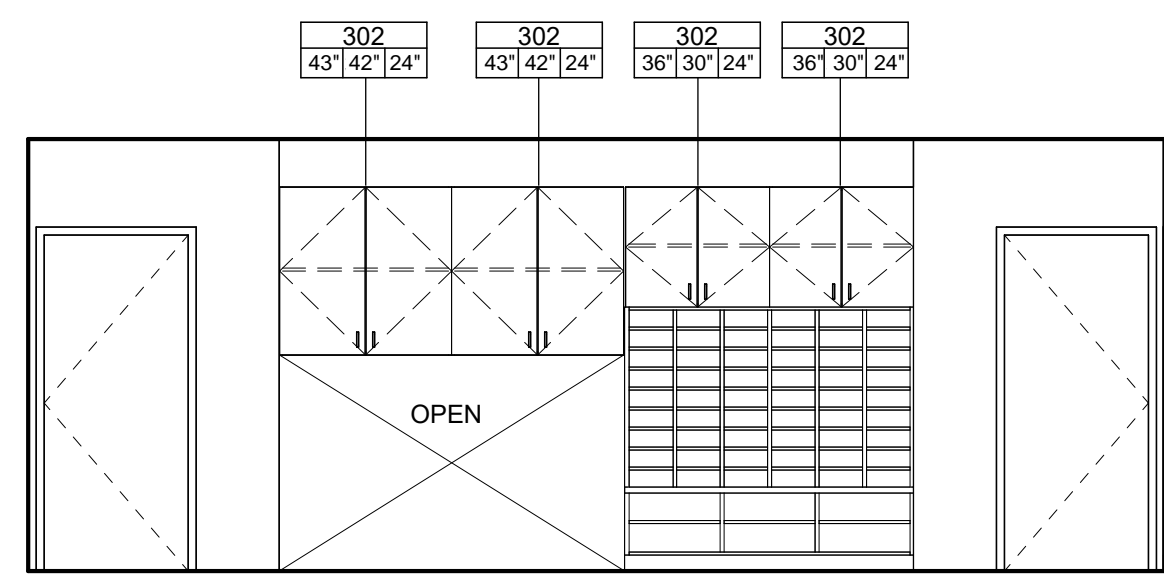
Project
CAMPUS MODERNIZATION -
INCREMENT 1

Sheet Title
INTERIOR ELEVATIONS

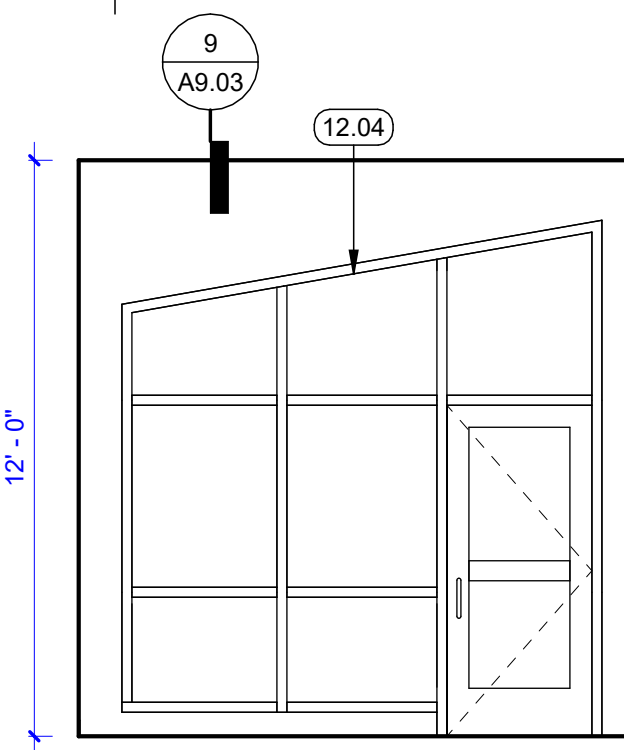
Client Project Number: Client Proj. #

Scale: 1/4" = 1'-0"
Drawn By: Author
Checked By: Checker
Issue Date: 12/15/23
Revit Version: 2023

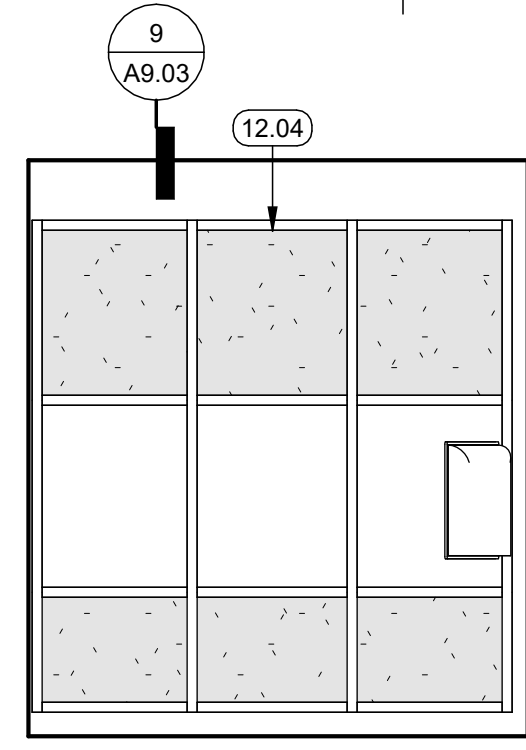
Sheet of
A5.01



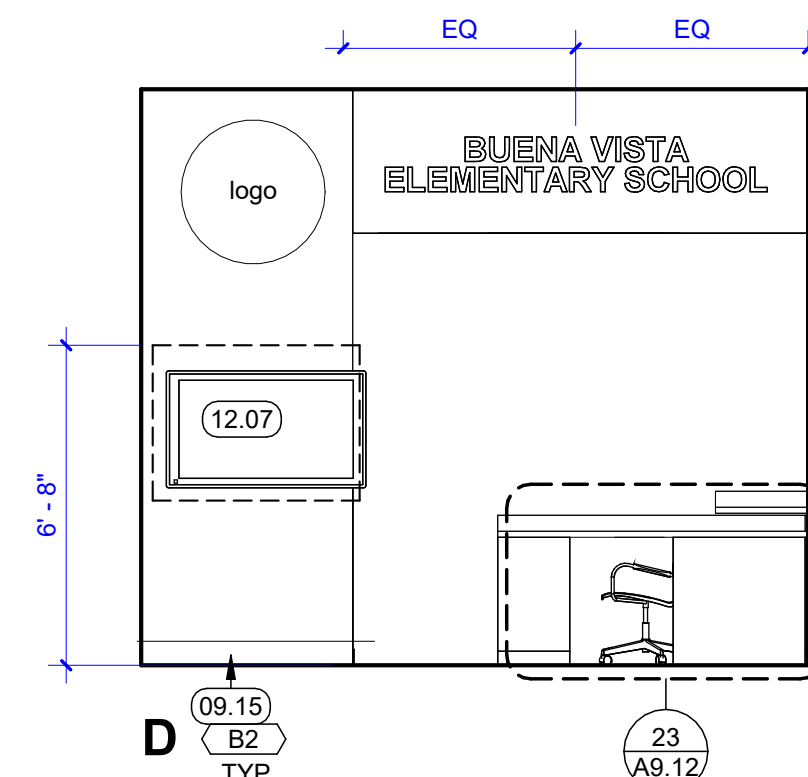
16 Elevation 9 - a
1/4" = 1'-0"



11 INT ELEV - LOBBY
1/4" = 1'-0"



C



D

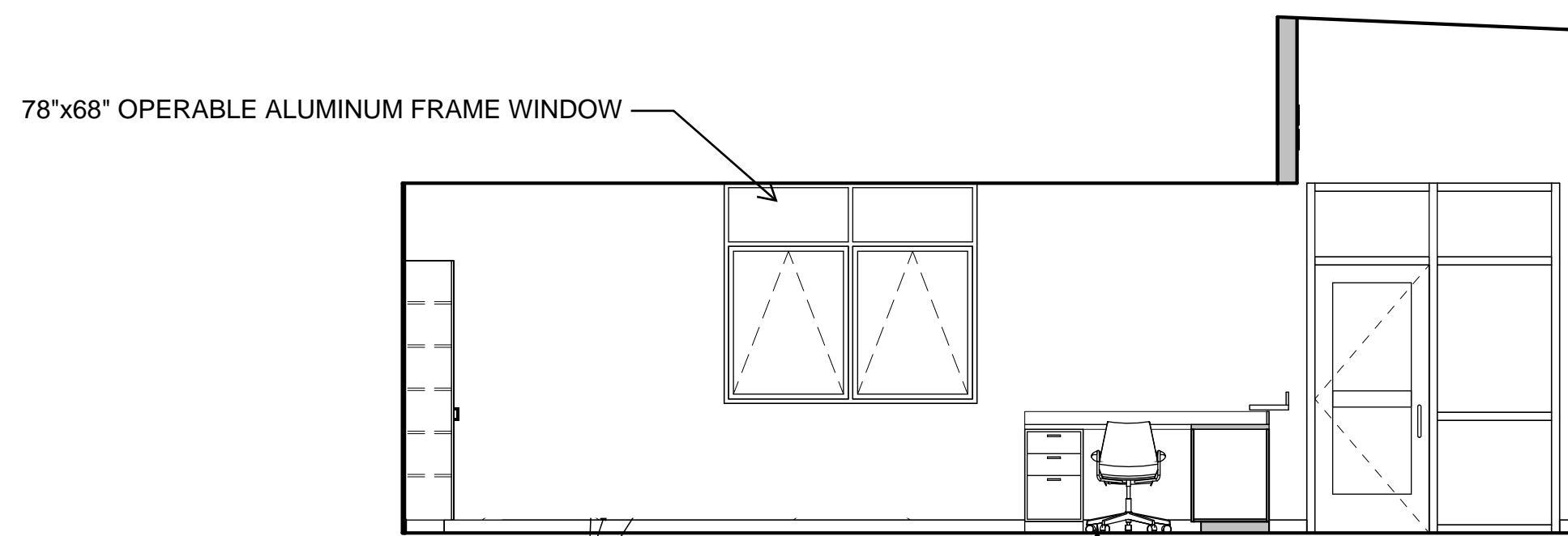
GENERAL INTERIOR ELEVATION NOTES

1. REFER TO 11.00 FOR FINISH SYMBOL LEGEND, GENERAL NOTES, & SCHEDULE.
2. REFER TO SG SERIES SHEETS FOR SIGNAGE CODE DESCRIPTIONS & SPECIFICATIONS.
3. FOR ADA COMPLIANT MOUNTING HEIGHTS OF FURNITURE, EQUIPMENT, TOILET & LAVATORY ACCESSORIES REFER TO 12 / A9.04



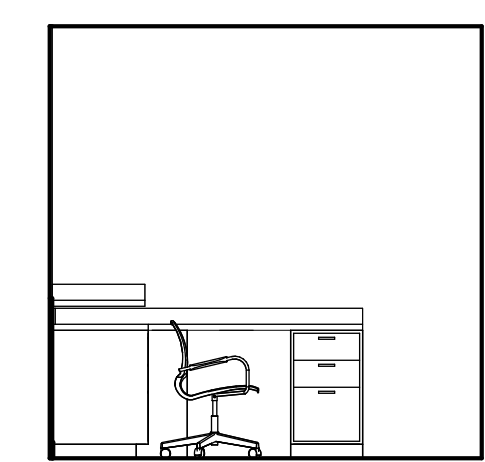
Delta	Date	Revisions	By

DSA SUBMITTAL

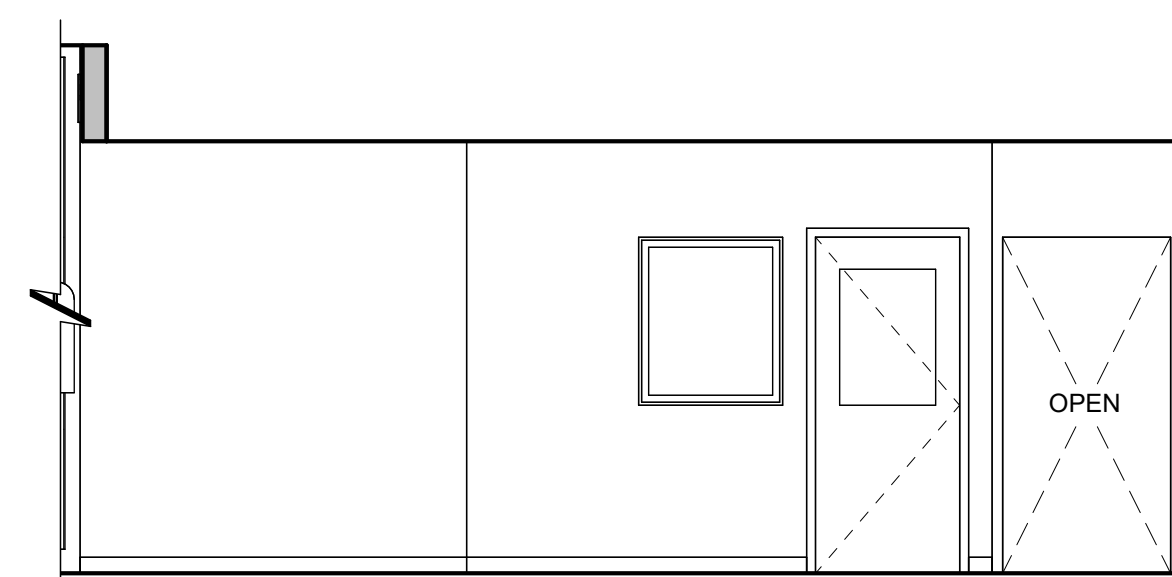


A

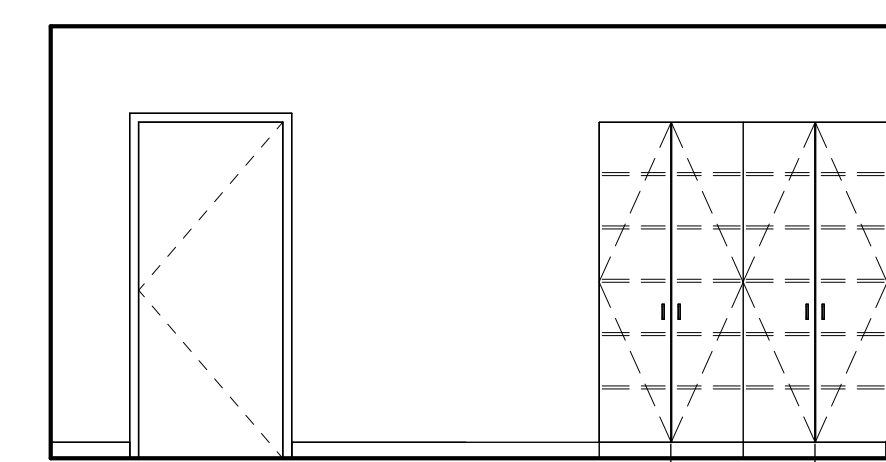
27 INT ELEV - MAIN OFFICE
1/4" = 1'-0"



B



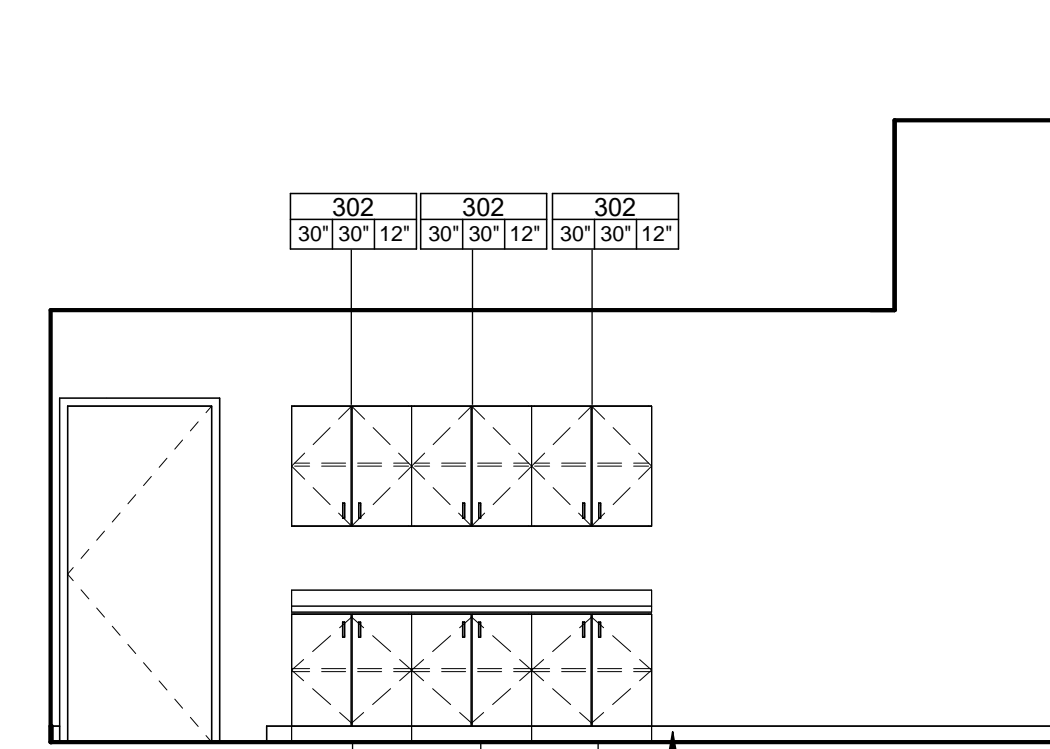
C



D

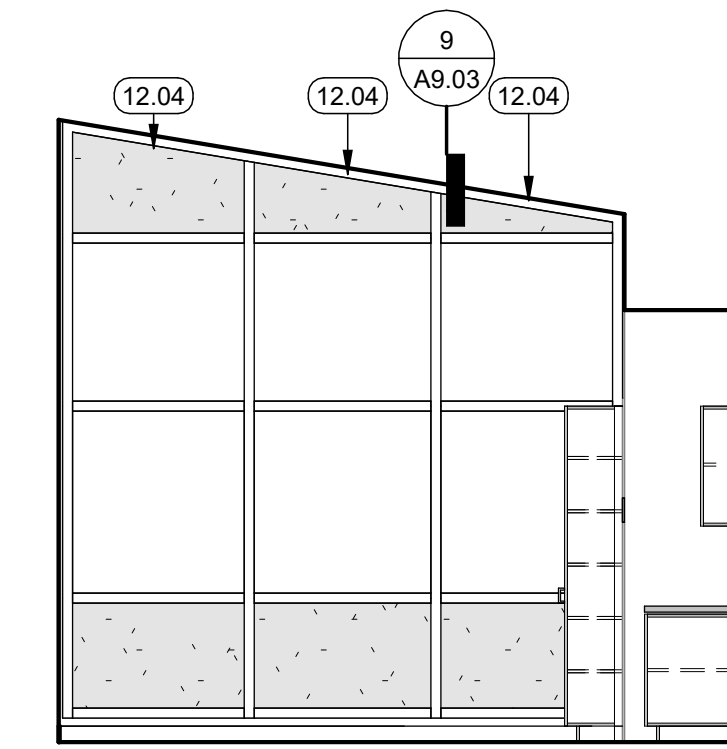
KEYNOTES

- 09.15 4" TOP SET WALL BASE
- 12.04 IN-CEILING MOTORIZED ROLLER SHADE
- 12.07 TELEVISION SCREEN DISPLAY, PROVIDE BLOCKING

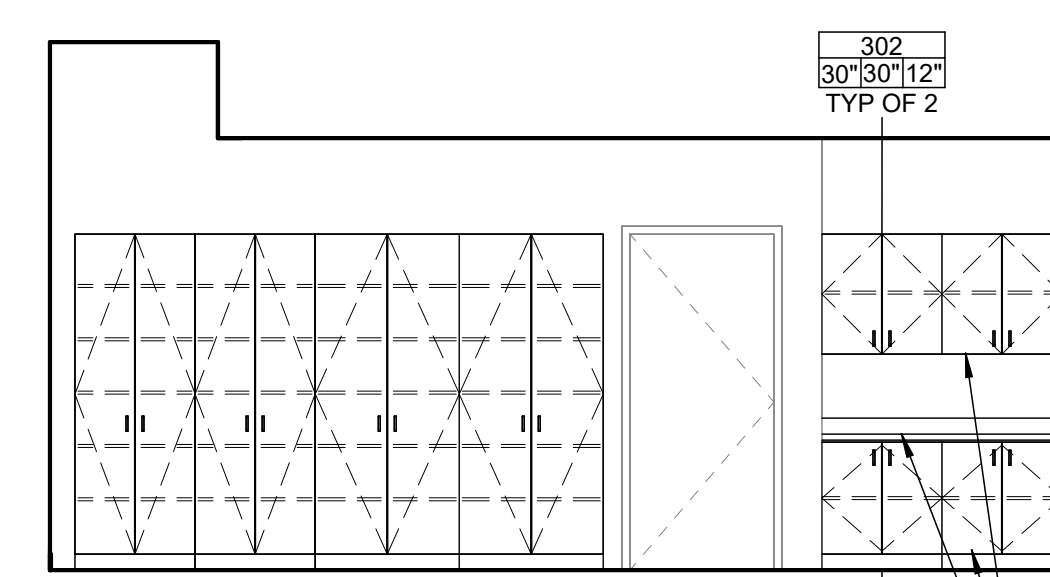


A

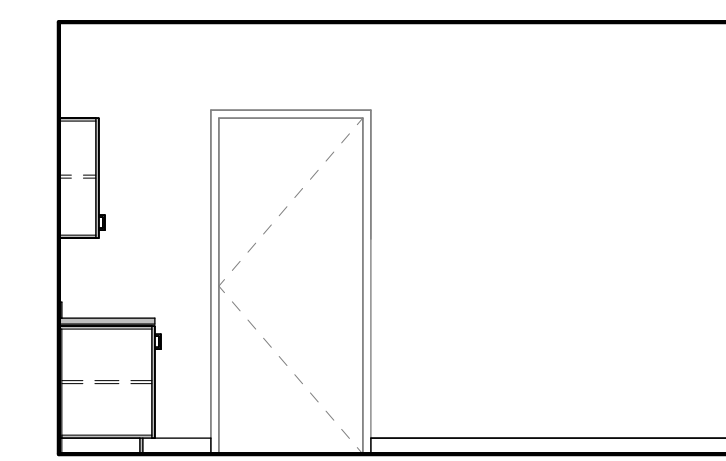
23 INT ELEV - WORKROOM
1/4" = 1'-0"



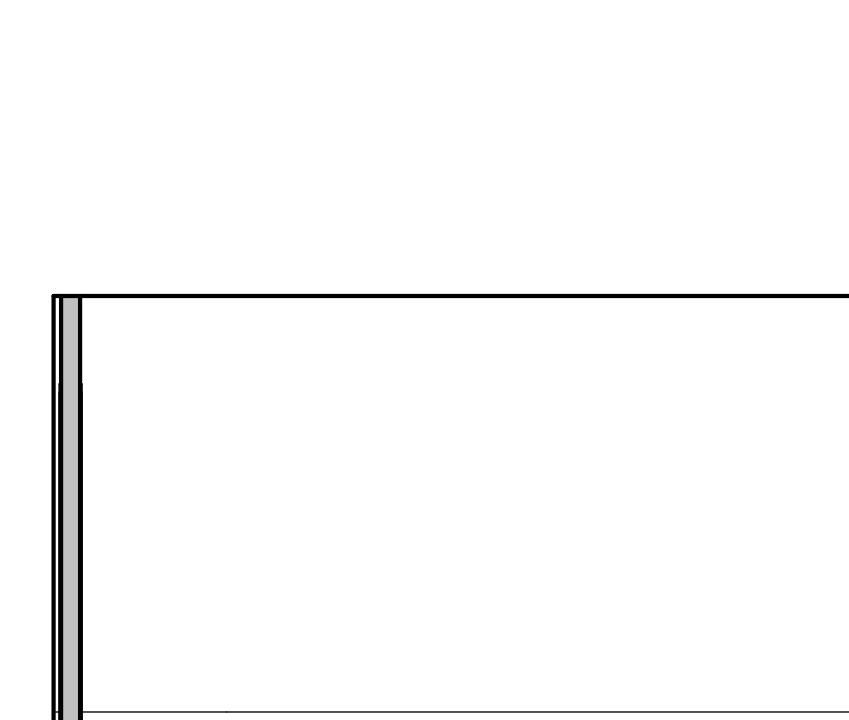
B



C

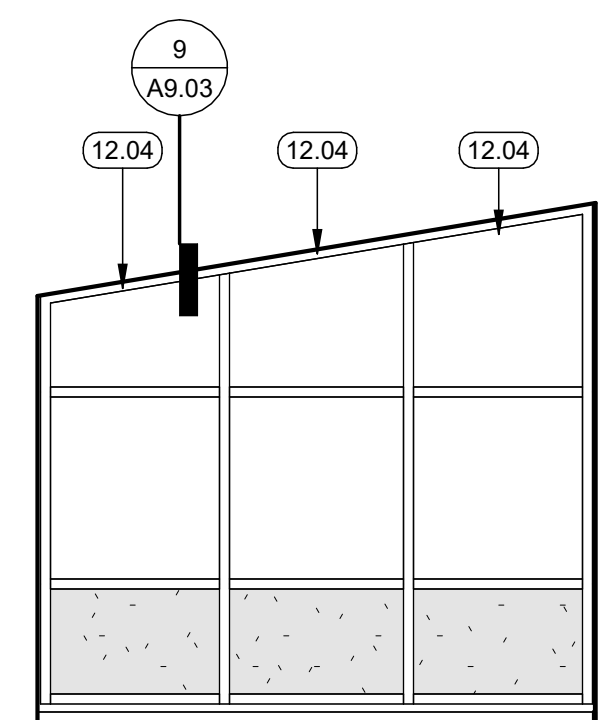


D

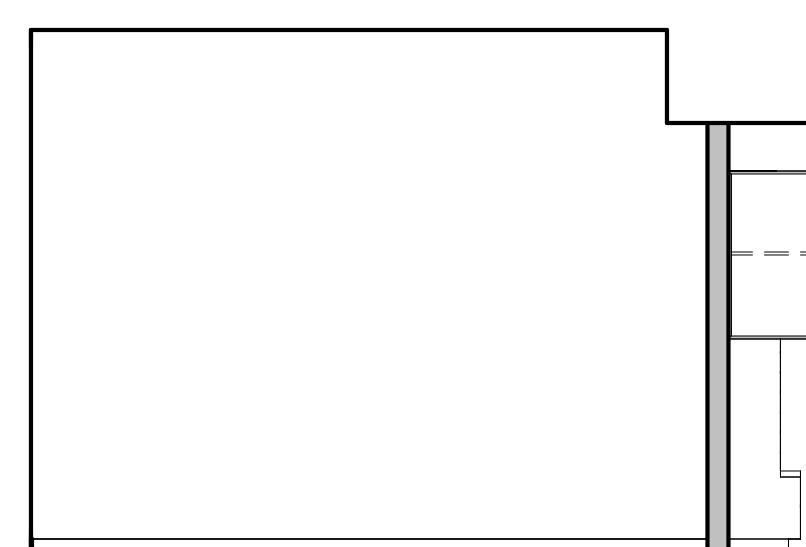


A

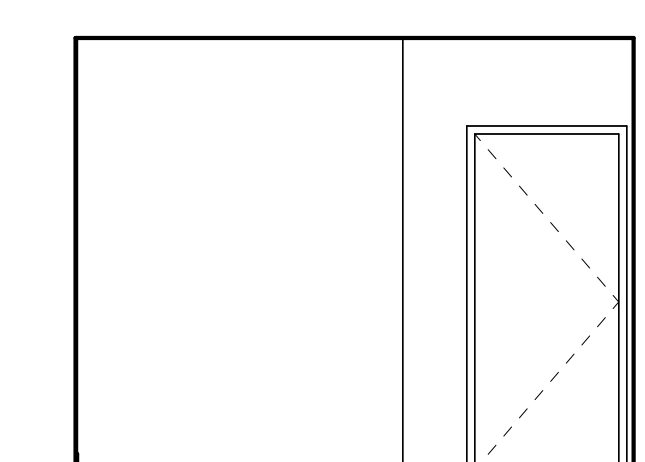
19 INTERIOR ELEVATION - CONFERENCE
1/4" = 1'-0"



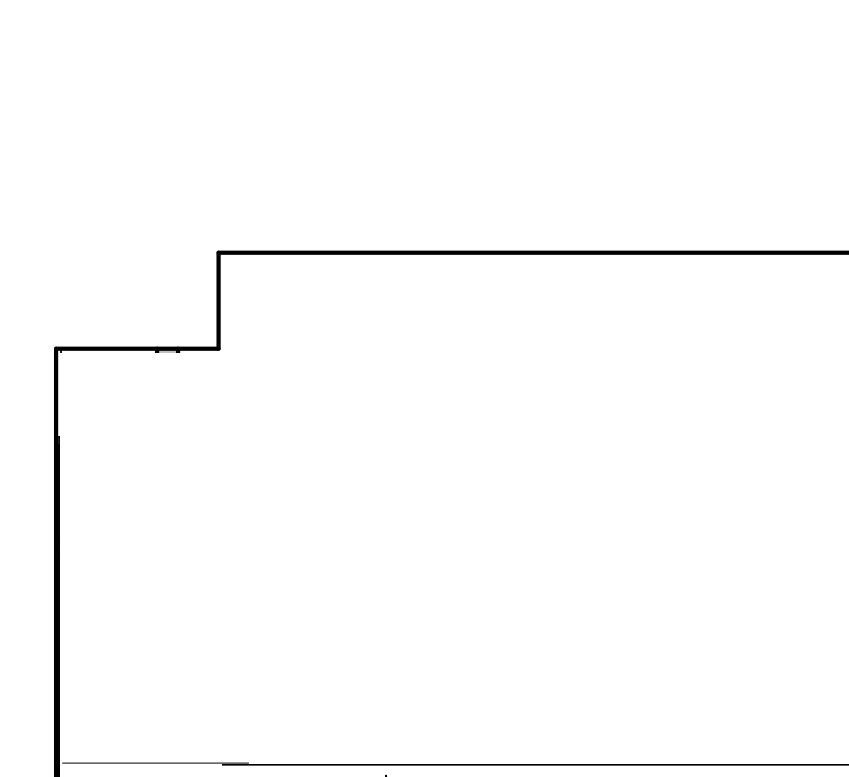
B



C

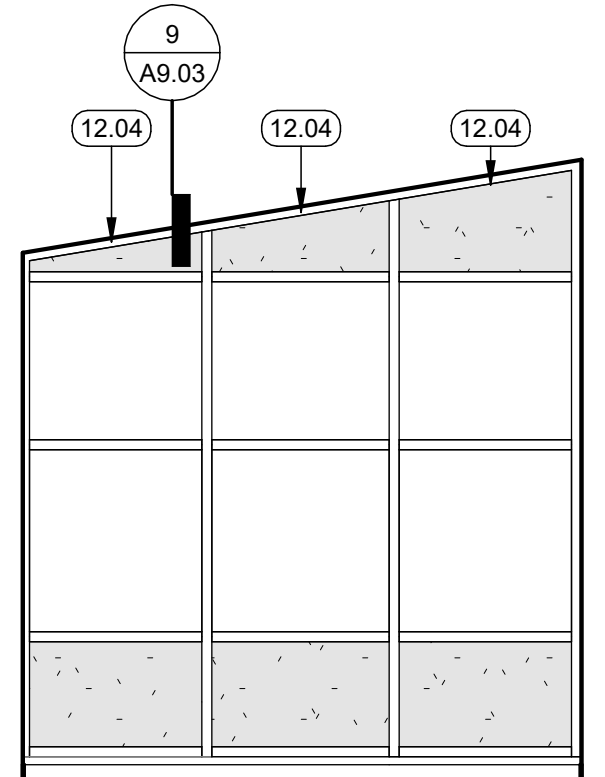


D

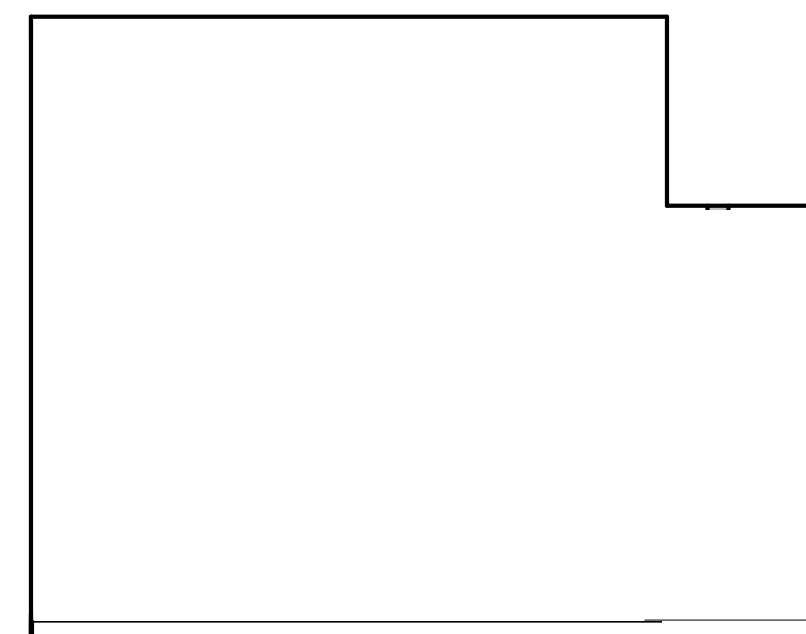


A

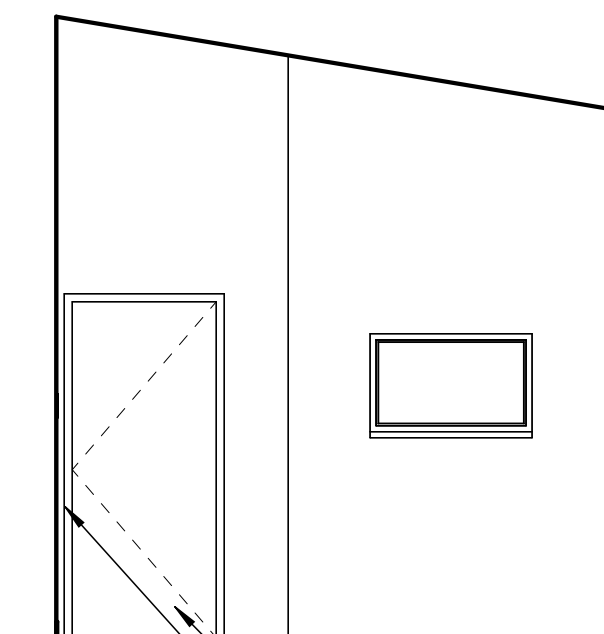
20 INTERIOR ELEVATION - PRINCIPAL
1/4" = 1'-0"



B



C



D



BUENA VISTA ELEMENTARY SCHOOL
2355 SAN JUAN AVE, WALNUT CREEK, CA 94597

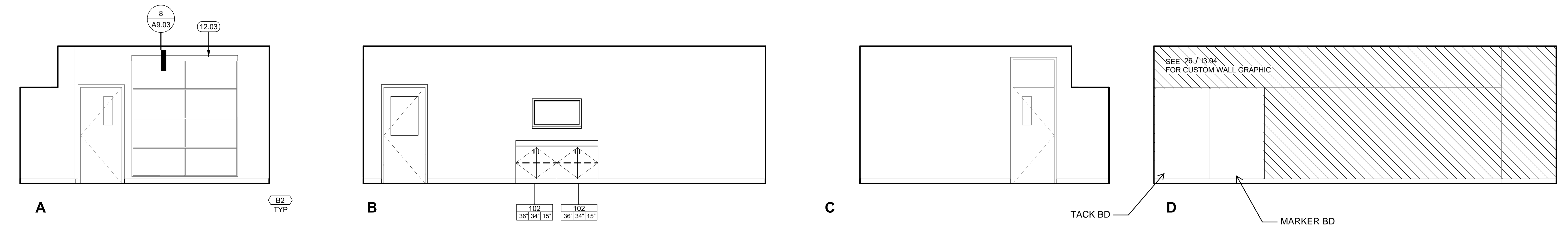
CAMPUS MODERNIZATION - INCREMENT 1

INTERIOR ELEVATIONS

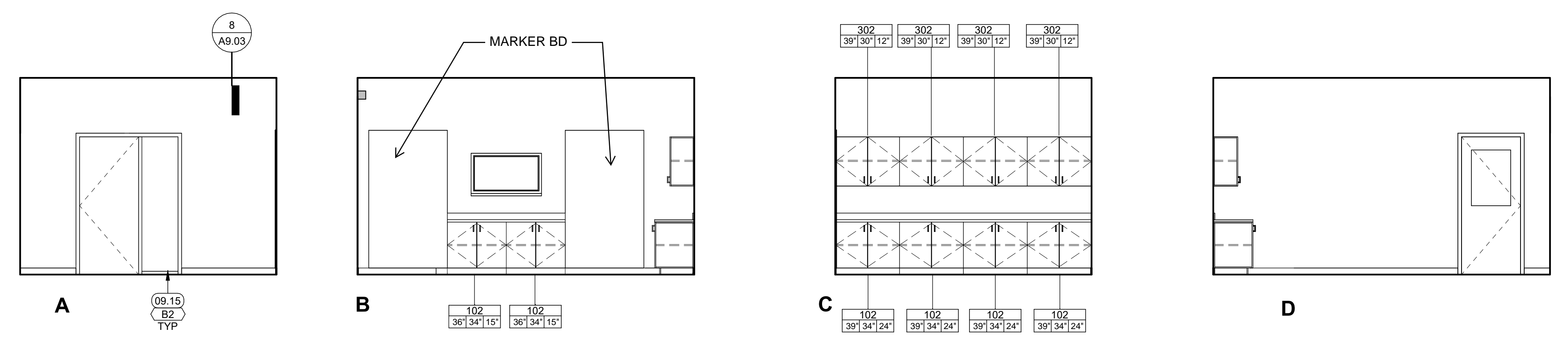
Client Project Number: _____ Client Proj. # _____
 Scale: 1/4" = 1'-0"
 Drawn By: Author
 Checked By: Checker
 Issue Date: 12/15/23
 Revit Version: 2023

Sheet of

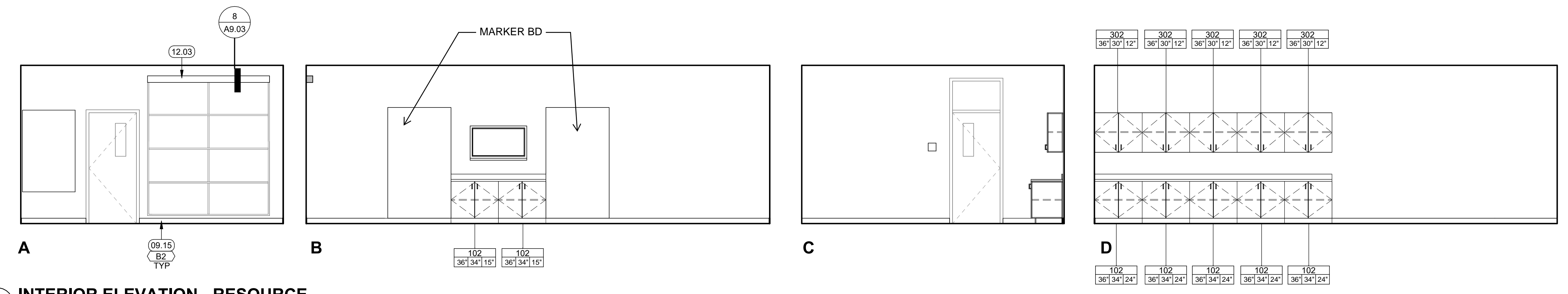
A5.04



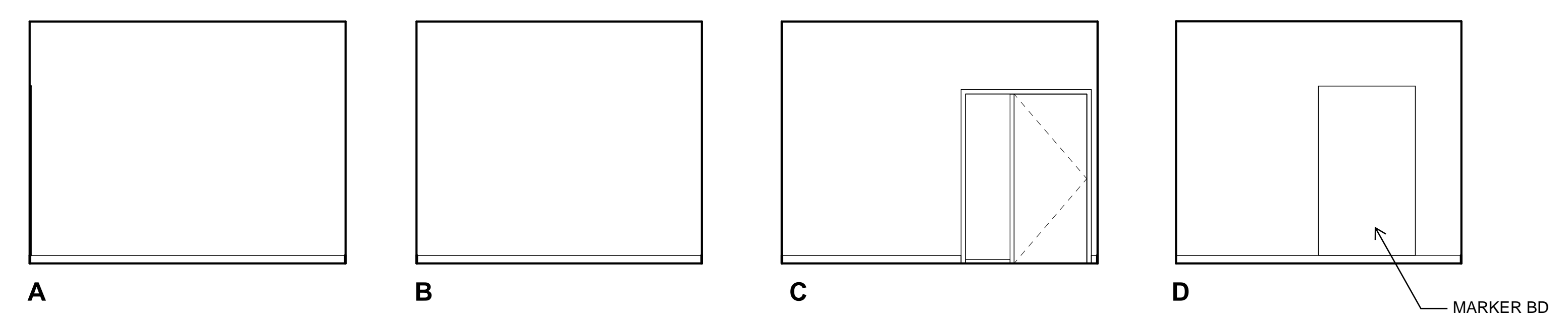
21 INTERIOR ELEVATION - WELLNESS CENTER
1/4" = 1'-0"



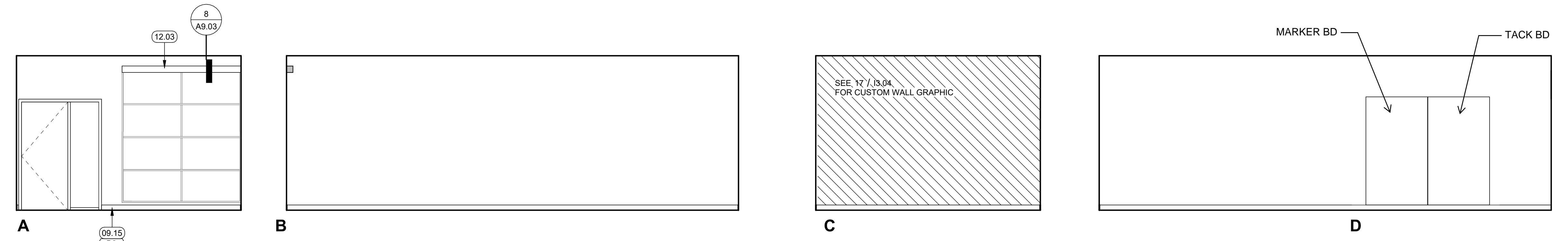
22 INTERIOR ELEVATION - INTERVENTION
1/4" = 1'-0"



23 INTERIOR ELEVATION - RESOURCE
1/4" = 1'-0"



24 INTERIOR ELEVATION - OFFICE
1/4" = 1'-0"



25 INTERIOR ELEVATION - OT/SPEECH
1/4" = 1'-0"

GENERAL INTERIOR ELEVATION NOTES

1. REFER TO 11.00 FOR FINISH SYMBOL LEGEND, GENERAL NOTES, & SCHEDULE.
2. REFER TO SG SERIES SHEETS FOR SIGNAGE CODE DESCRIPTIONS & SPECIFICATIONS.
3. FOR ADA COMPLIANT MOUNTING HEIGHTS OF FURNITURE, EQUIPMENT, TOILET & LAVATORY ACCESSORIES REFER TO 12 / A9.04

KEYNOTES

- | | |
|-------|---|
| 09.15 | 4" TOP SET WALL BASE |
| 12.03 | WALL-MOUNT MOTORIZED ROLLER SHADE WITH FASCIA |

Revisions	Delta	Date	Revisions	By

DSA SUBMITTAL

This document is the property of the Owner and is not to be used without his written permission.

This document is the property of the Owner and is not to be used without his written permission.

HY HIBSER YAMAUCHI Architects, Inc.
300 - 27th Street
Oakland, CA 94612
510.446.2222 | 510.446.2211 fax

HY Architects Project number: 6034

Facility
BUENA VISTA ELEMENTARY SCHOOL
2355 SAN JUAN AVE, WALNUT CREEK, CA
94597

Project
CAMPUS MODERNIZATION -
INCREMENT 1

Sheet Title
INTERIOR ELEVATIONS

Client Project Number: Client Proj. #

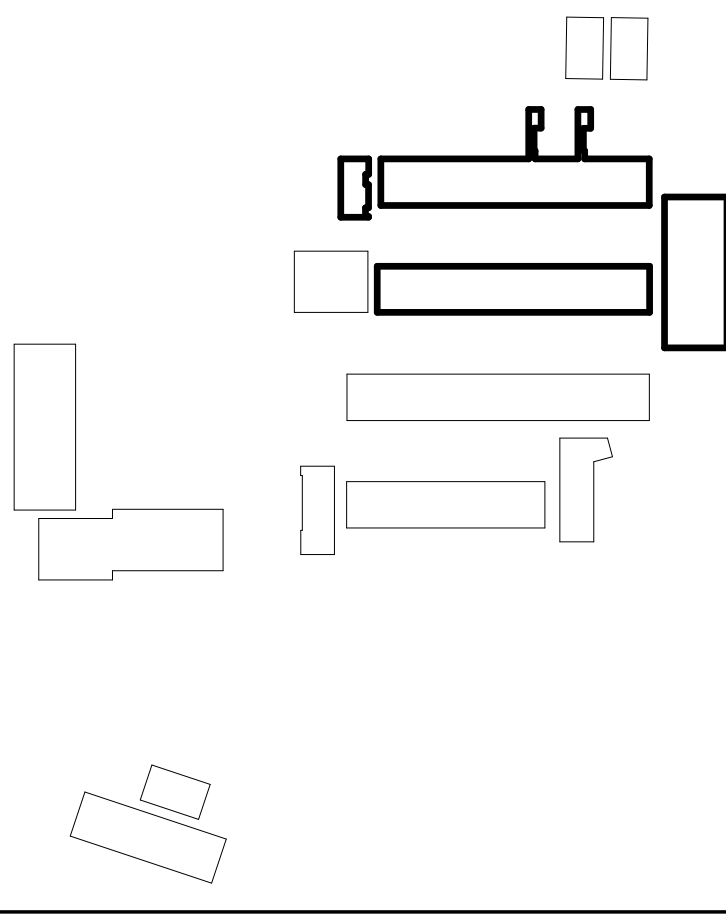
Scale: 1/4" = 1'-0"
Drawn By: Author
Checked By: Checker
Issue Date: 12/15/23
Revit Version: 2023

Sheet of
A5.06



Revisions	Delta	Date	Revisions	By

DSA SUBMITTAL



This document is the property of the Owner and is not to be used without his written permission.

HY HIBSER YAMAUCHI Architects, Inc.
 300 - 27th Street
 Oakland, CA 94612
 510.446.2222 | 510.446.2211 fax
 HY Architects Project number: 6034

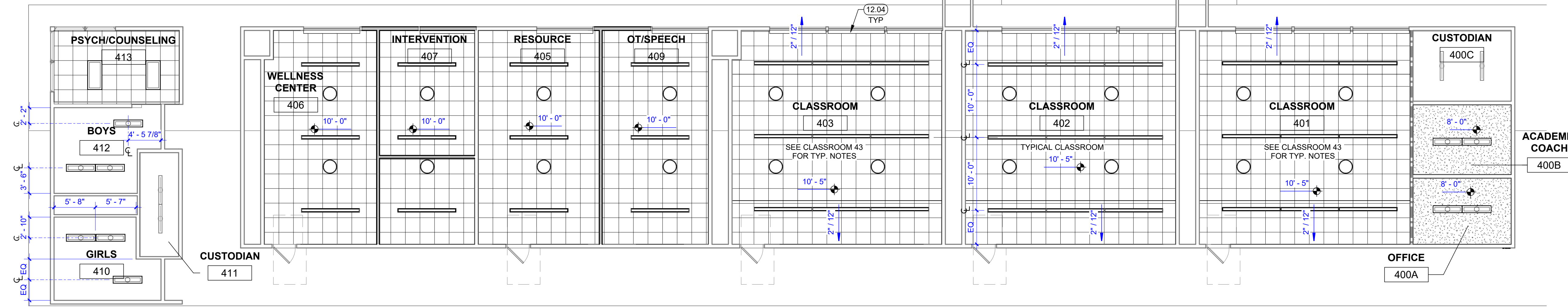
Facility
BUENA VISTA ELEMENTARY SCHOOL
 2355 SAN JUAN AVE, WALNUT CREEK, CA 94597

Project
CAMPUS MODERNIZATION - INCREMENT 1

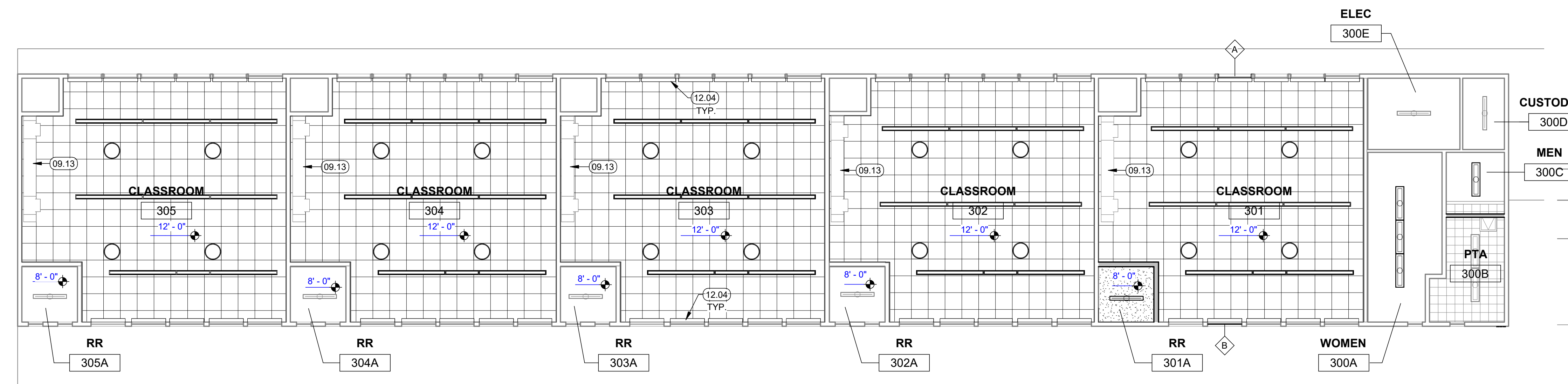
Sheet Title
REFLECTED CEILING PLANS - BLDG 300, 400, & 600

Client Project Number: _____ Client Proj. # _____
 Scale: As indicated
 Drawn By: Author
 Checked By: Checker
 Issue Date: 12/15/23
 Revit Version: 2023

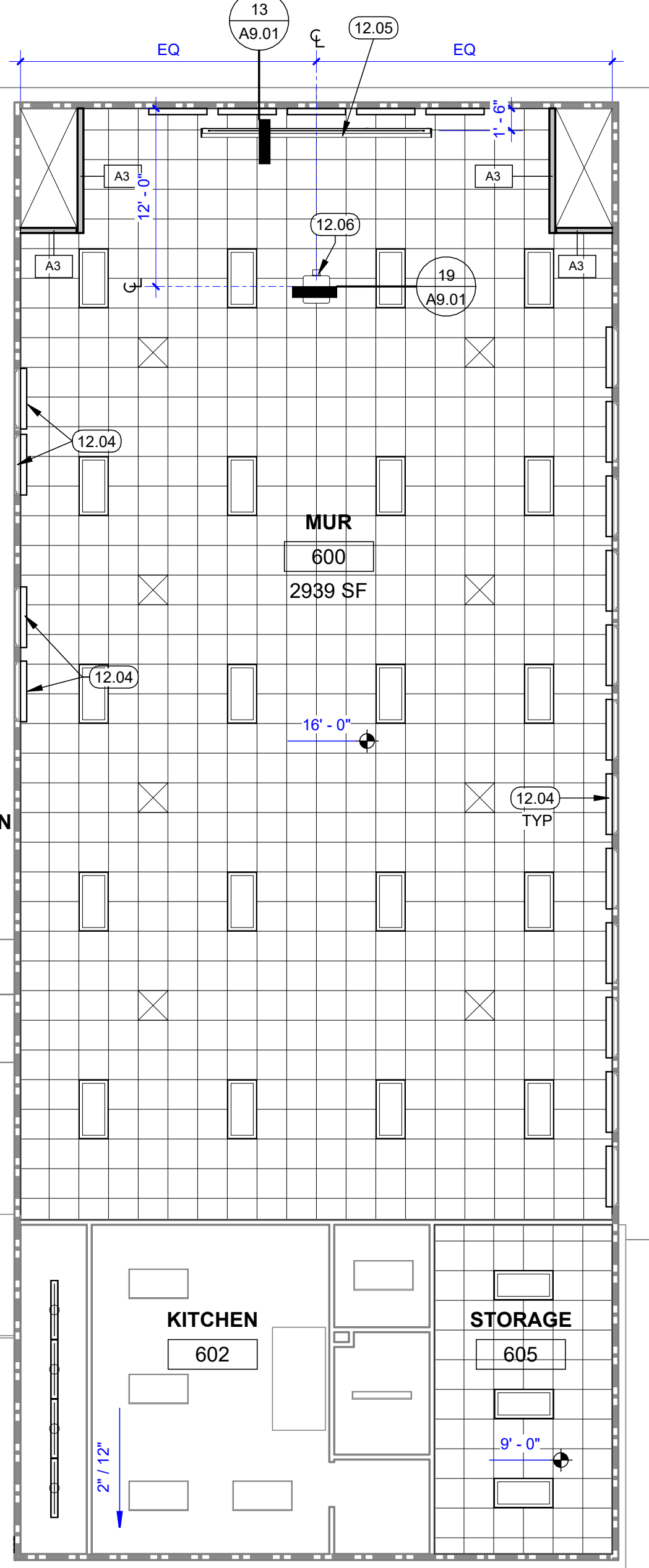
A6.04



28 REFLECTED CEILING PLAN - BLDG 400
 1/8" = 1'-0"



25 REFLECTED CEILING PLAN - BLDG 300
 1/8" = 1'-0"



1 REFLECTED CEILING PLAN - BLDG 600
 1/8" = 1'-0"

GENERAL NOTES

- NOTIFY ARCHITECT OF ANY IN THE FIELD DISCREPANCIES PRIOR TO INSTALLATION.
- REFER TO I1.00 FOR FINISH SCHEDULE, SYMBOL LEGEND & GENERAL NOTES FOR CEILING FINISH & WINDOW TREATMENT TYPES PER LOCATION.
- REFER TO S, M, P, E, & F SERIES SHEETS FOR ADDITIONAL INFORMATION.

PARTITION LEGEND

NOTE: FOR ANY PARTITION THAT IS NOT TAGGED ON THE PLAN, REFER TO ITS CORRESPONDING GRAPHIC IN THIS WALL LEGEND TO DETERMINE ITS TYPE

EXISTING WALL & PARTITION TYPES:

- (E) 1 HR. RATED FIRE PARTITION (CORRIDOR) W/ 20 MIN. PROTECTED OPENINGS.
- (E) 2 HR. RATED FIRE BARRIER W/ 90 MIN. PROTECTED OPENINGS (OCCUPANCY SEPARATION).
- (E) NON-RATED FIRE-RESISTIVE PARTITION (W/ UNPROTECTED OPENINGS) AND/ OR EXTERIOR WALL TO REMAIN.
- (E) STRUCTURAL WALL, SSD.

NEW WALL & PARTITION TYPES:

- A1 (N) NON-RATED FIRE-RESISTIVE PARTITION W/ UNPROTECTED OPENINGS, TYP UON, SEE 5 / A9.01
- A2 (N) NON-RATED FIRE-RESISTIVE PARTITION W/ UNPROTECTED OPENINGS, TYP UON, SEE 10 / A9.01
- A3 (N) NON-RATED FIRE-RESISTIVE PARTITION W/ UNPROTECTED OPENINGS, TYP UON, SEE 15 / A9.01
- B1 (N) NON-RATED FIRE-RESISTIVE PARTITION W/ UNPROTECTED OPENINGS, TYP UON, SEE 20 / A9.01

KEYNOTES

09.13	CLEAN AND PAINT (E) DUCT
12.04	IN-CEILING MOTORIZED ROLLER SHADE
12.05	CEILING-MOUNTED PROJECTION SCREEN
12.06	CEILING-MOUNTED PROJECTOR

REFLECTED CEILING PLAN LEGEND

	(E) GYP BD CEILING TO REMAIN, TYP		24"X48" RECESSED LIGHT FIXTURE, TYP SED
	24" x 24" SUSPENDED ACCOUSTICAL CEILING SYSTEM. SEE SHEETS A9.03		12"X48" SURFACE MOUNTED LIGHT FIXTURE, TYP SED
	GYPSUM BOARD CEILING SEE SHEETS A9.03. REFER TO FINISH SCHEDULE & GENERAL FINISH NOTES ON I1.00 FOR PAINT COLOR & SHEEN PER LOCATION		6"X48" SURFACE MOUNTED LIGHT FIXTURE, TYP SED
	(E) 12"X48" SURFACE MOUNTED LIGHT FIXTURE TO REMAIN, TYP		PENDANT, TYP SED
	(E) 6"X48" SURFACE MOUNTED LIGHT FIXTURE TO REMAIN, TYP		SOLATUBE, TYP
	24"X24" AIR TERMINAL, SMD		24"X24" CEILING ACCESS HATCH, SEE DETAIL



GENERAL NOTES

1. NOTIFY ARCHITECT OF ANY IN THE FIELD DISCREPANCIES PRIOR TO INSTALLATION.
2. REFER TO I1.00 FOR FINISH SCHEDULE, SYMBOL LEGEND & GENERAL NOTES FOR CEILING FINISH & WINDOW TREATMENT TYPES PER LOCATION.
3. REFER TO S, M, P, E, & F SERIES SHEETS FOR ADDITIONAL INFORMATION.

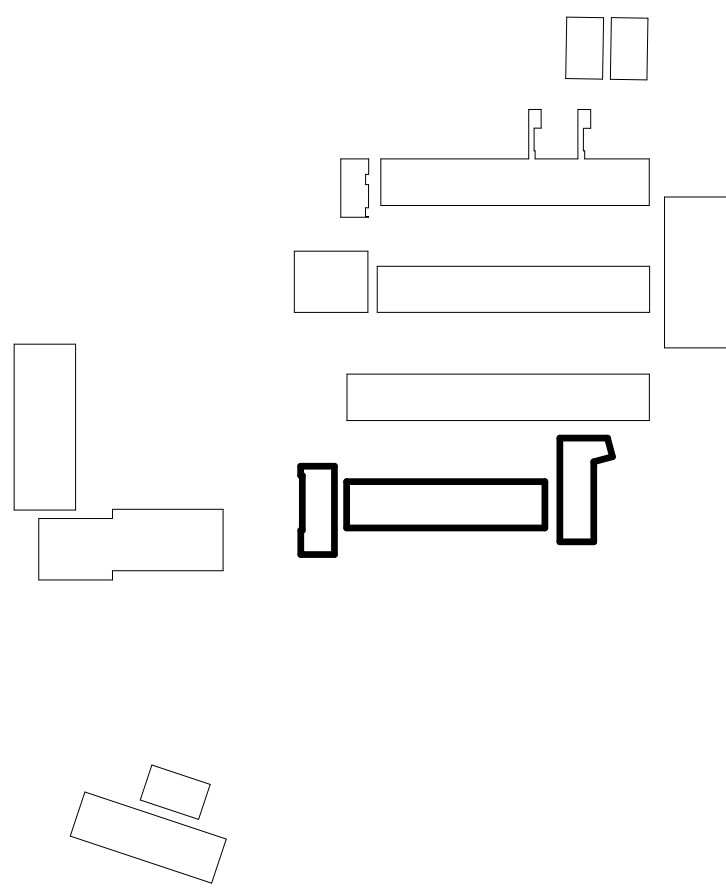
PARTITION LEGEND

NOTE: FOR ANY PARTITION THAT IS NOT TAGGED ON THE PLAN, REFER TO ITS CORRESPONDING GRAPHIC IN THIS WALL LEGEND TO DETERMINE ITS TYPE

- EXISTING WALL & PARTITION TYPES:**
- (E) NON-RATED FIRE-RESISTIVE PARTITION (W/ UNPROTECTED OPENINGS) AND/ OR EXTERIOR WALL TO REMAIN.
- NEW WALL & PARTITION TYPES:**
- A1 (N) NON-RATED FIRE-RESISTIVE PARTITION W/ UNPROTECTED OPENINGS, TYP UON, SEE 5 AB.01
 - A2 (N) NON-RATED FIRE-RESISTIVE PARTITION W/ UNPROTECTED OPENINGS, TYP UON, SEE 10 AB.01
 - B1 (N) NON-RATED FIRE-RESISTIVE PARTITION W/ UNPROTECTED OPENINGS, TYP UON, SEE 20 AB.01
 - P1 (N) NON-RATED FIRE-RESISTIVE PARTITION W/ UNPROTECTED OPENINGS, TYP UON, SEE 25 AB.01

Revisions	Delta	Date	Revisions	By

DSA SUBMITTAL



KEYNOTES

- 12.03 WALL-MOUNT MOTORIZED ROLLER SHADE WITH FASCIA

REFLECTED CEILING PLAN LEGEND

- (E) GYP BD CEILING TO REMAIN, TYP
- 24" x 24" SUSPENDED ACCOUSTICAL CEILING SYSTEM, SEE SHEET A9.03
- GYPSUM BOARD CEILING SEE SHEET A8.03 REFER TO FINISH SCHEDULE & GENERAL FINISH NOTES ON I1.00 FOR PAINT COLOR & SHEEN PER LOCATION
- (E) 12" x 12" SUSPENDED ACCOUSTICAL CEILING SYSTEM TO REMAIN, TYP
- (E) 24"x48" RECESSED LIGHT FIXTURE TO REMAIN, TYP SED
- (E) 12"x48" SURFACE MOUNTED LIGHT FIXTURE TO REMAIN, TYP SED
- (E) 6"x48" SURFACE MOUNTED LIGHT FIXTURE TO REMAIN, TYP SED
- 24"x48" SURFACE MOUNTED LIGHT FIXTURE, TYP SED
- 12"x48" SURFACE MOUNTED LIGHT FIXTURE, TYP SED
- 24"x48" RECESSED LIGHT FIXTURE, TYP SED
- 12"x48" RECESSED LIGHT FIXTURE, TYP SED
- PENDANT, TYP SED
- SOLATUBE, TYP SED
- 24"x24" CEILING ACCESS HATCH, SEE DETAIL
- EXTERIOR METAL CEILING, SEE DETAIL 26 / A8.20

This document is the property of the Owner and is not to be used without his written permission

HY HIBSER YAMAUCHI Architects, Inc.
 300 - 27th Street
 Oakland, CA 94612
 510.446.2222 w | 510.446.2211 fax
 HY Architects Project number: 6034

Facility
BUENA VISTA ELEMENTARY SCHOOL
 2355 SAN JUAN AVE, WALNUT CREEK, CA 94597

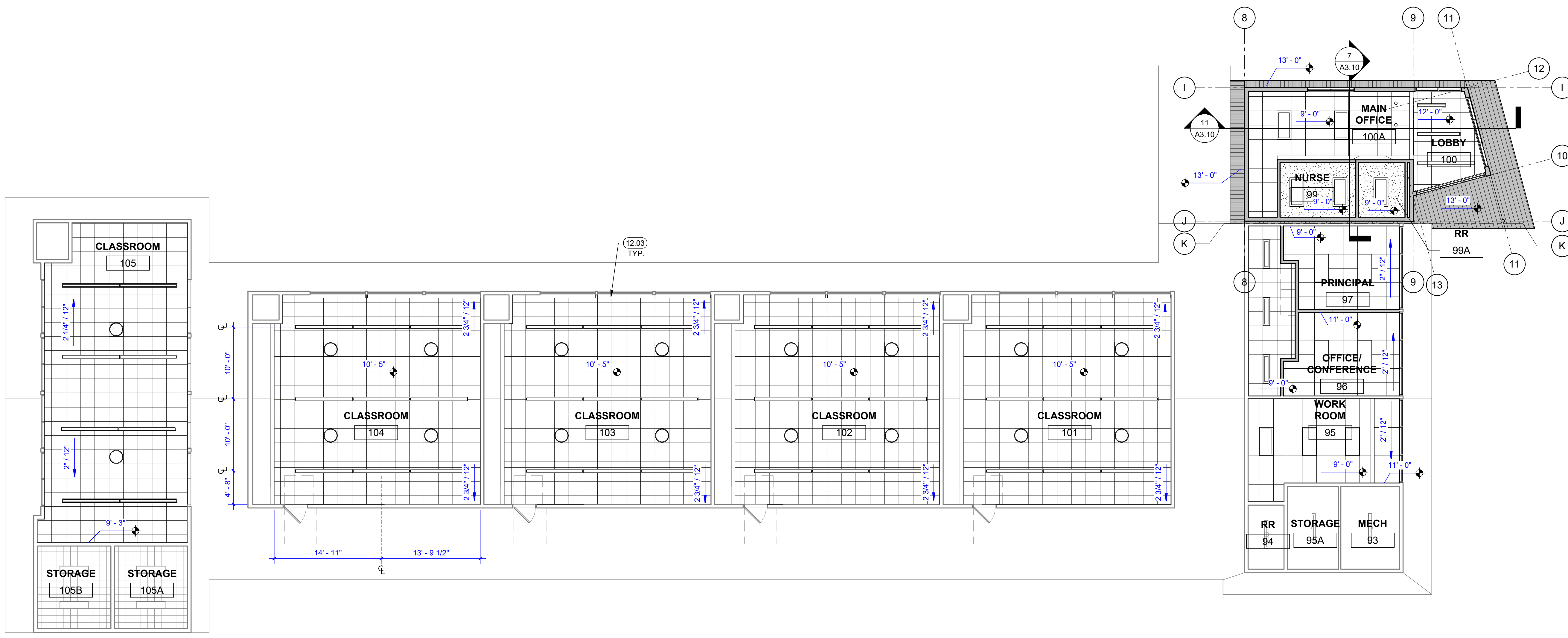
Project
CAMPUS MODERNIZATION - INCREMENT 1

Sheet Title
REFLECTED CEILING PLANS - BLDG 100

Client Project Number: _____ Client Proj. # _____
 Scale: As indicated
 Drawn By: Author
 Checked By: Checker
 Issue Date: 12/15/23
 Revit Version: 2023

A6.06

Sheet of



10 REFLECTED CEILING PLAN - BLDG 100
 1/8" = 1'-0"